

APP CRS	Rwy Idg	<b>10000</b>
<b>116°</b>	TDZE	<b>9</b>
	Apt Elev	<b>9</b>

# RNAV (RNP) Z RWY 12

## METROPOLITAN OAKLAND INTL (OAK)

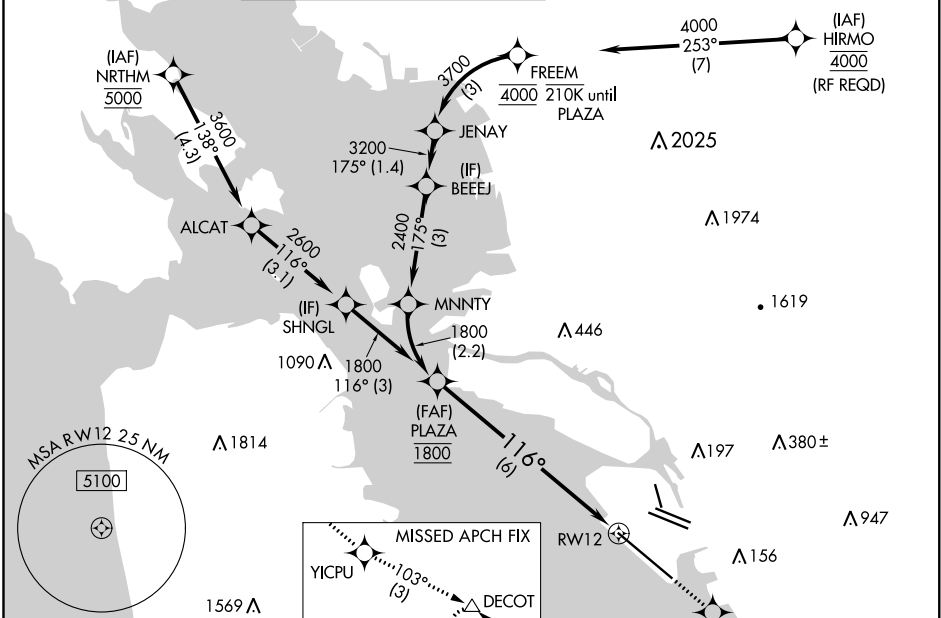
**RNP AR APCH.**

▼ For uncompensated Baro-VNAV systems, procedure NA below 0°C or above 54°C. For inop ALS increase RNP 0.15 visibility all Cats to RVR 4500, RNP 0.30 visibility all Cats to RVR 5500.

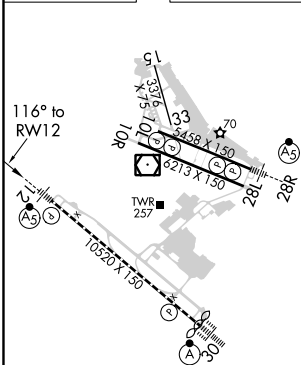
**MALSRL**

MISSED APPROACH: Climb direct HISIS to cross HISIS at or below 1600 then climb to 5400 on track 116° to YICPU and on track 103° to DECOT and hold, continue climb-in-hold to 5400.

D-ATIS <b>133.775</b>	NORCAL APP CON <b>125.35 263.15</b>	<b>OAKLAND TOWER</b> <b>118.3 291.65</b> (Rwys 10L/R-28L/R, 15-33) <b>127.2 256.9</b> (Rwy 12-30)		GND CON <b>121.9</b> (Rwys 10L/R-28L/R, 15-33) <b>121.75</b> (Rwy 12-30)	CLNC DEL <b>121.1</b>	CPDLC
--------------------------	--	---	--	--	--------------------------	-------



ELEV	<b>9</b>	TDZE	<b>9</b>
------	----------	------	----------



See planview for multiple IF locations.

PLAZA 1800	HISIS 1600	5400 tr 116°	YICPU tr 103°	DECOT △
---------------	---------------	-----------------	------------------	------------

VGSI and RNAV glidepath not coincident (VGSI Angle 2.75/TCH 70).

6 NM

GP 2.75° TCH 55

CATEGORY	A	B	C	D
RNP 0.15 DA		289/24	280 (300-½)	
RNP 0.30 DA		386/35	377 (400-⅓)	

**AUTHORIZATION REQUIRED**

SW-2, 10 OCT 2019 to 07 NOV 2019

SW-2, 10 OCT 2019 to 07 NOV 2019