

APP CRS	Rwy Idg	10000
296°	TDZE	9
	Apt Elev	9

RNAV (RNP) Z RWY 30

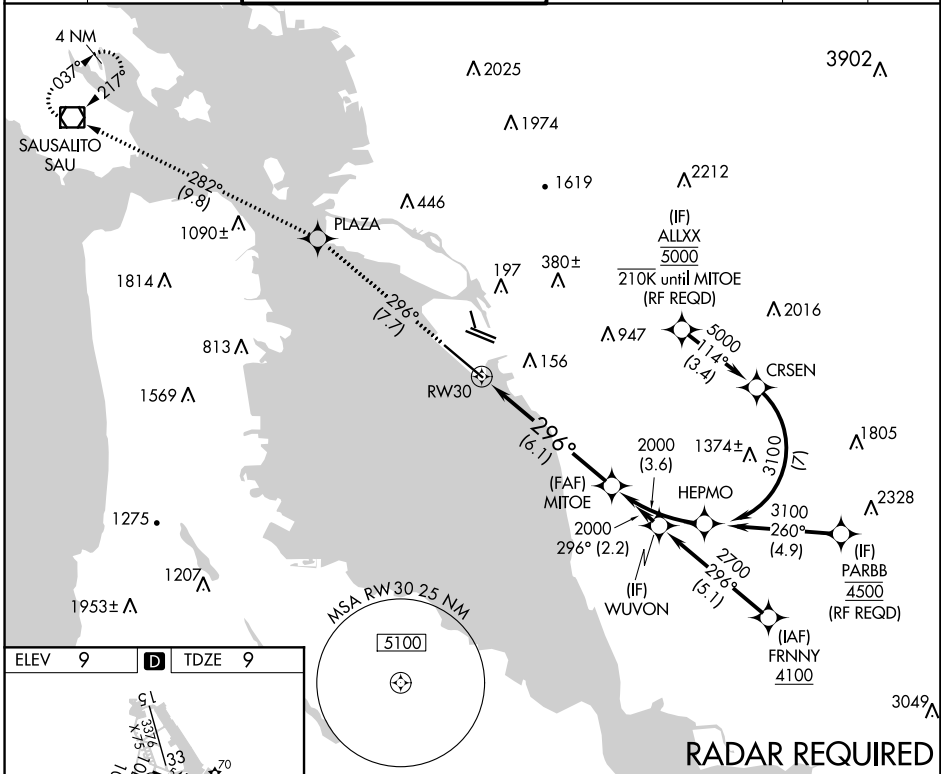
METROPOLITAN OAKLAND INTL (OAK)

GPS required. For uncompensated Baro-VNAV systems, procedure NA below 1°C (34°F) or above 54°C (130°F). For inop ALS increase RNP 0.11 visibility all Cats to RVR 4000.



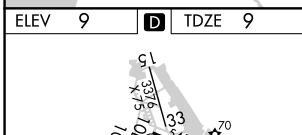
MISSED APPROACH: Climb to 4000 on track 296° to PLAZA and on track 282° to SAU VOR/DME and hold, continue climb-in-hold to 4000.

D-ATIS 133.775	NORCAL APP CON 125.35 263.15	OAKLAND TOWER 118.3 291.65 (Rwys 10L/R-28L/R, 15-33) 127.2 256.9 (Rwy 12-30)		GND CON 121.9 (Rwys 10L/R-28L/R, 15-33) 121.75 (Rwy 12-30)	CLNC DEL 121.1	CPDLC
--------------------------	--	--	--	--	--------------------------	-------

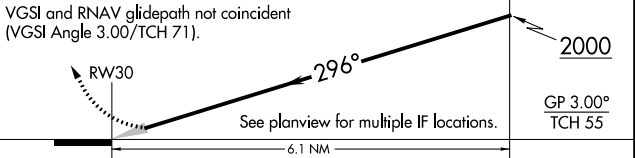


SW-2, 10 OCT 2019 to 07 NOV 2019

SW-2, 10 OCT 2019 to 07 NOV 2019



ELEV 9	D	TDZE 9
4000	PLAZA	SAU
fr 296°	tr 282°	



CATEGORY	A	B	C	D
RNP 0.11 DA		267/24	258 (300-½)	
RNP 0.30 DA		317/24	308 (400-½)	

AUTHORIZATION REQUIRED