

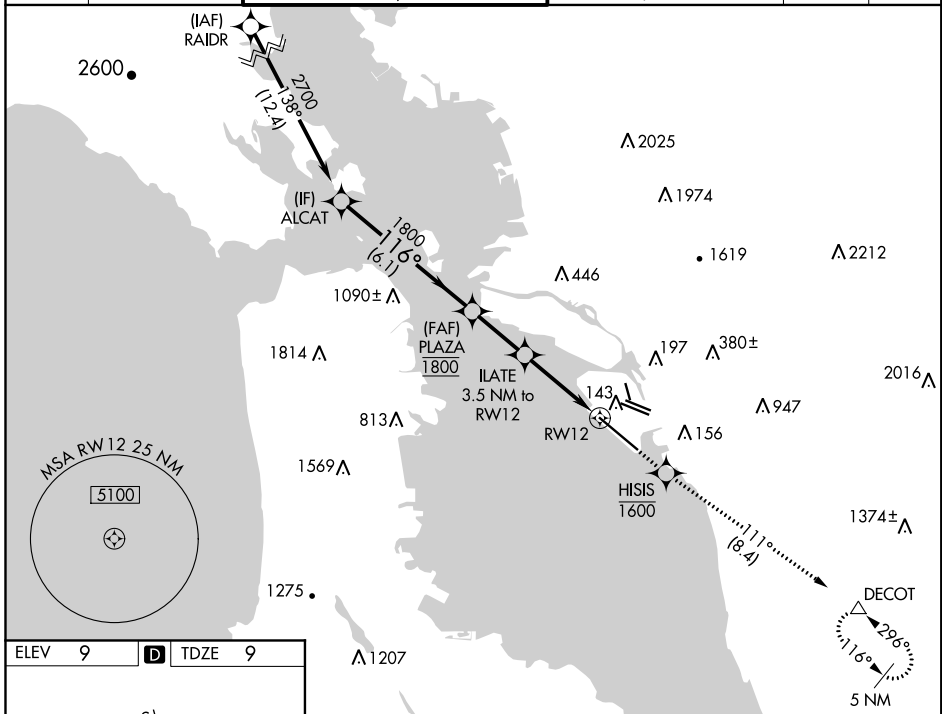
WAAS CH <b>86418</b> <b>W12A</b>	APP CRS <b>116°</b>	Rwy Idg <b>10000</b> TDZE <b>9</b> Apt Elev <b>9</b>
--	------------------------	--

# RNAV (GPS) Y RWY 12

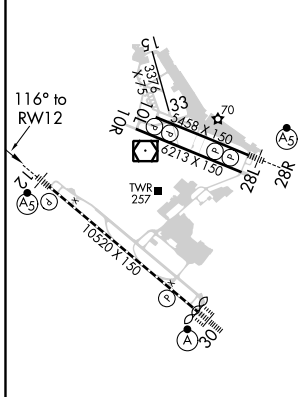
METROPOLITAN OAKLAND INTL (OAK)

<p><b>▼</b> For uncompensated Baro-VNAV systems, LNAV/VNAV NA below 0°C (32°F) or above 54°C (130°F). DME/DME RNP-0.3 NA. #RVR 1800 authorized with use of FD or AP or HUD to DA.</p>	<p>MALSR </p>	<p>MISSED APPROACH: Climb direct HISIS to cross HISIS at or below 1600, then climb to 5400 on track 111° to DECOT and hold, continue climb-in-hold to 5400.</p>
---	---------------	---

D-ATIS <b>133.775</b>	NORCAL APP CON <b>125.35 263.15</b>	OAKLAND TOWER <b>118.3 291.65</b> (Rwys 10L/R-28L/R, 15-33) <b>127.2 256.9</b> (Rwy 12-30)	GND CON <b>121.9</b> (Rwys 10L/R-28L/R, 15-33) <b>121.75</b> (Rwy 12-30)	CLNC DEL <b>121.1</b>	CPDLC
--------------------------	--	--	--	--------------------------	-------

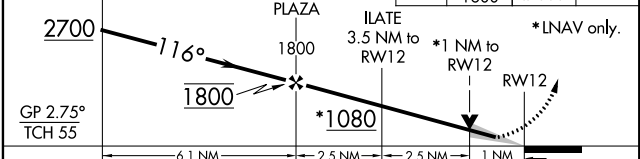


ELEV 9	<b>D</b>	TDZE 9
--------	----------	--------



REIL Rwy 10R  
TDZ/CL Rwy 30  
MIRL Rwy 15-33  
HIRL Rwys 12-30, 10L-28R, 10R-28L

VGSI and RNAV glidepath not coincident (VGSI Angle 2.75/TCH 70).  
ALCAT



CATEGORY	A	B	C	D
LPV DA#	209/24	200 (200-½)		
LNAV/ VNAV DA	304/27	295 (300-⅝)		
LNAV MDA	360/24	351 (400-½)	360/30	351 (400-⅝)
<b>C</b> CIRCLING	560-1	551 (600-1)	660-1¾ 651 (700-1¾)	1380-3 1371 (1400-3)

SW-2, 10 OCT 2019 to 07 NOV 2019

SW-2, 10 OCT 2019 to 07 NOV 2019