

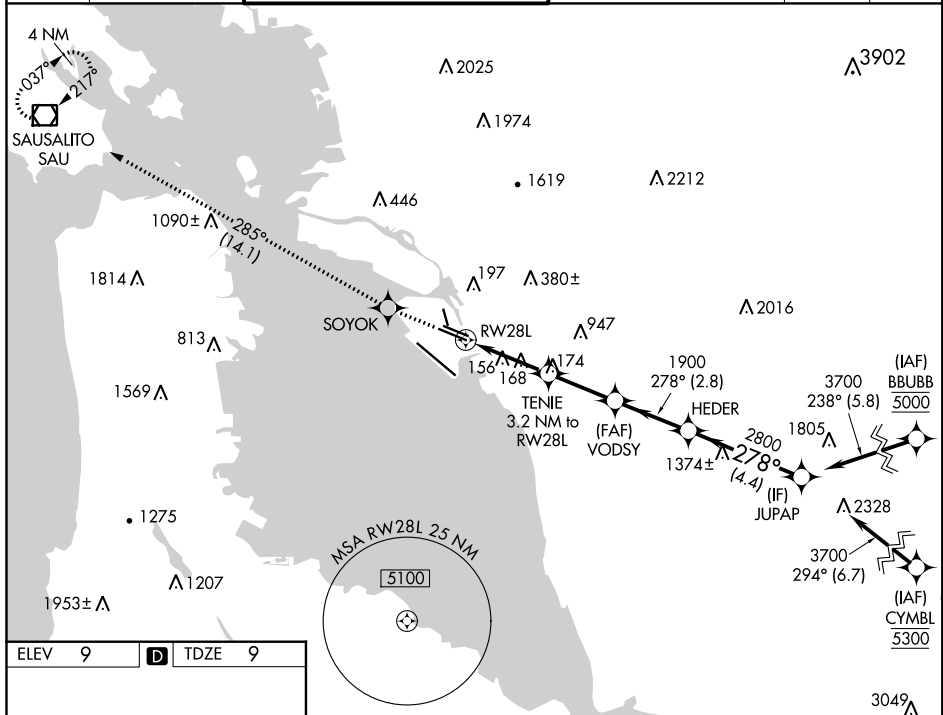
RNAV (GPS) Y RWY 28L

METROPOLITAN OAKLAND INTL (OAK)

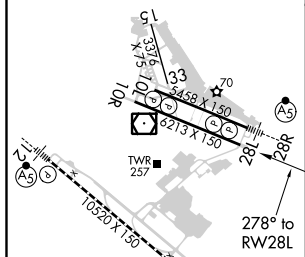
WAAS CH 72700 W28A	APP CRS 278°	Rwy Idg TDZE Apt Elev	6213 9 9
--	------------------------	-----------------------------	-------------------------------------

▽ For uncompensated Baro-VNAV systems, LNAV/VNAV NA below 0°C (32°F) or above 54°C (130°F). △ DME/DME RNP-0.3 NA.	MISSED APPROACH: Climb to 4000 direct SOYOK and on track 285° to SAU VOR/DME and hold, continue climb-in-hold to 4000.
--	---

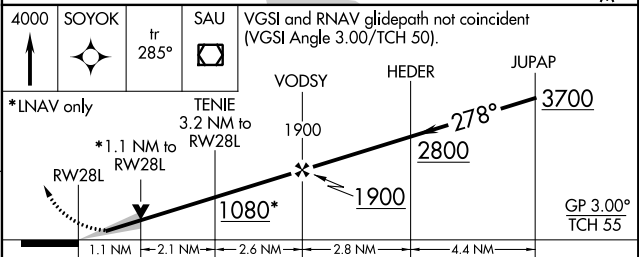
D-ATIS 133.775	NORCAL APP CON 125.35 263.15	OAKLAND TOWER 118.3 291.65 (Rwys 10L/R-28L/R, 15-33) 127.2 256.9 (Rwy 12-30)	GND CON 121.9 (Rwys 10L/R-28L/R, 15-33) 121.75 (Rwy 12-30)	CLNC DEL 121.1	CPDLC
--------------------------	--	--	--	--------------------------	-------



ELEV 9	D	TDZE 9
--------	----------	--------



REIL Rwy 10R TDZ/CL Rwy 30 MIRL Rwy 15-33 HIRL Rwys 12-30, 10L-28R, 10R-28L
--



CATEGORY	A	B	C	D
LPV DA		209/40	200 (200-¾)	
LNAV/VNAV DA		387-1¼	378 (400-1¼)	
LNAV MDA	420/55	411 (500-1)	420/60	411 (500-1¼)
C CIRCLING	560-1	551 (600-1)	660-1¾ 651 (700-1¾)	1400-3 1391 (1400-3)

SW-2, 10 OCT 2019 to 07 NOV 2019

SW-2, 10 OCT 2019 to 07 NOV 2019