
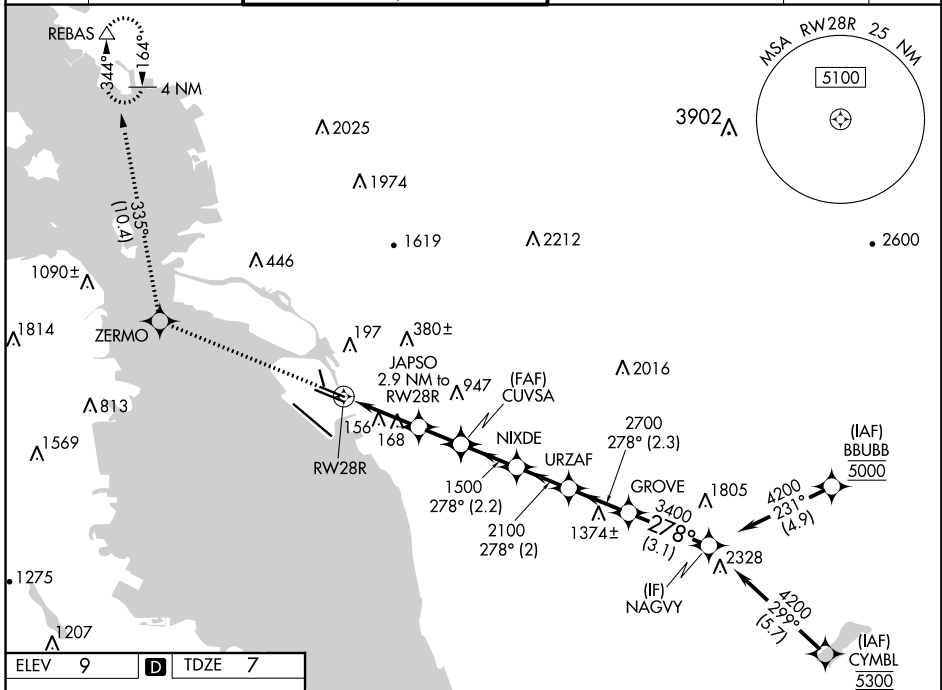


WAAS CH 42535 W28B	APP CRS 278°	Rwy Idg TDZE Apt Elev	5458 7 9
--	------------------------	-----------------------------	-------------------------------------

RNAV (GPS) Y RWY 28R

METROPOLITAN OAKLAND INTL (OAK)

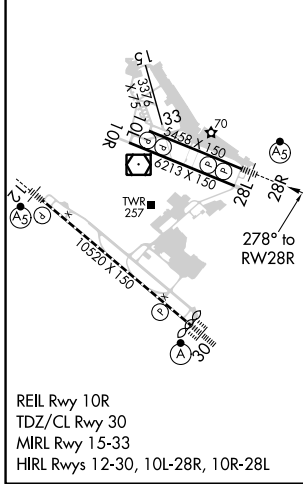
<p>▼ DME/DME RNP-0.3 NA. For uncompensated Baro-VNAV systems, LNAV/VNAV NA below 1°C (34°F) or above 54°C (130°F). #RVR 1800 authorized with use of FD or AP or HUD to DA.</p>		<p>MALSR</p> 	<p>MISSED APPROACH: Climb to 3000 direct ZERMO and on track 335° to REBAS and hold.</p>			
D-ATIS 133.775	NORCAL APP CON 125.35 263.15	<p>OAKLAND TOWER 118.3 291.65 (Rwys 10L/R-28L/R, 15-33) 127.2 256.9 (Rwy 12-30)</p>		GND CON 121.9 (Rwys 10L/R-28L/R, 15-33) 121.75 (Rwy 12-30)	CLNC DEL 121.1	CPDLC



SW-2, 10 OCT 2019 to 07 NOV 2019

SW-2, 10 OCT 2019 to 07 NOV 2019

ELEV 9	D	TDZE 7
--------	----------	--------



3000	ZERMO	tr	REBAS					
		335°						
*LNAV only.								
	RW28R	JAPSO	CUVSA	NIXDE	URZAF	GROVE	NAGVY	
		2.9 NM to RW28R	1500	2100	2700	3400	4200	
		1.2 NM to RW28R	980	1500				GP 3.00° TCH 53
		1.2 NM	1.7 NM	1.6 NM	2.2 NM	2.3 NM	3.1 NM	
CATEGORY	A		B		C		D	
LPV DA #			207/24		200 (200-½)			
LNAV/VNAV DA			387/40		380 (400-¾)			
LNAV MDA	440/24		433 (500-½)		440/40		433 (500-¾)	
C CIRCLING	560-1		551 (600-1)		660-1¾ 651 (700-1¾)		1400-3 1391 (1400-3)	