

(SALAD5.SALAD) 17341

# SALAD FIVE DEPARTURE

AL-294 (FAA)

METROPOLITAN OAKLAND INTL (OAK)  
OAKLAND, CALIFORNIA

D-ATIS  
133.775  
CLNC DEL  
121.1  
CPDLC  
GND CON  
121.9 (Rwys 28L/R)  
OAKLAND TOWER  
118.3 291.65 (Rwys 28L/R)  
NORCAL DEP CON  
120.9 323.2

**TOP ALTITUDE:  
ASSIGNED BY ATC**

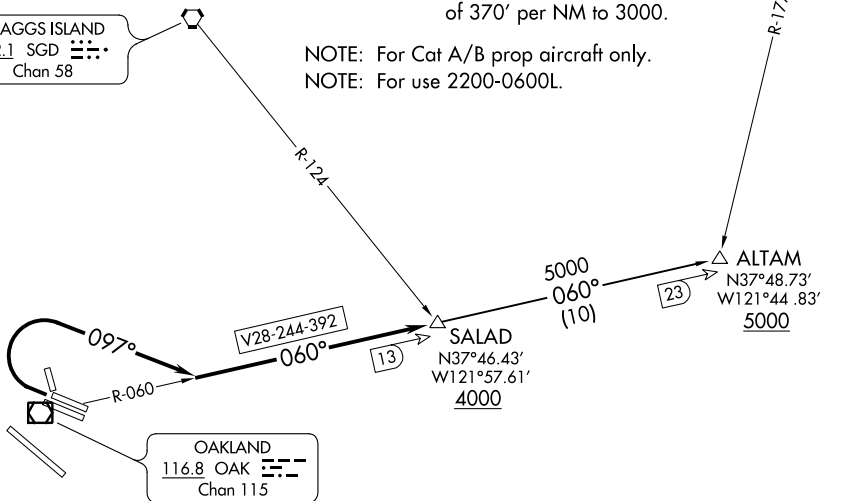
SACRAMENTO  
115.2 SAC  
Chan 99

### TAKEOFF MINIMUMS

Rwys 10L, 10R, 12, 15, 30, 33: NA-ATC.  
Rwys 28L, 28R: Standard with minimum climb  
of 370' per NM to 3000.

NOTE: For Cat A/B prop aircraft only.  
NOTE: For use 2200-0600L.

SCAGGS ISLAND  
112.1 SGD  
Chan 58



NOTE: Chart not to scale.

### DEPARTURE ROUTE DESCRIPTION

TAKEOFF RUNWAYS 28 L/R: Climbing right turn heading 097° to intercept OAK VOR/DME R-060 to cross SALAD/OAK 13 DME at or above 4000, thence . . . .  
. . . . on ALTAM transition. Maintain ATC assigned altitude. Expect filed altitude 10 minutes after departure.

ALTAM TRANSITION (SALAD5.ALTAM): From over SALAD on OAK R-060 to ALTAM.

SW-2, 10 OCT 2019 to 07 NOV 2019

SW-2, 10 OCT 2019 to 07 NOV 2019

SALAD FIVE DEPARTURE  
(SALAD5.SALAD) 17AUG17

OAKLAND, CALIFORNIA  
METROPOLITAN OAKLAND INTL (OAK)