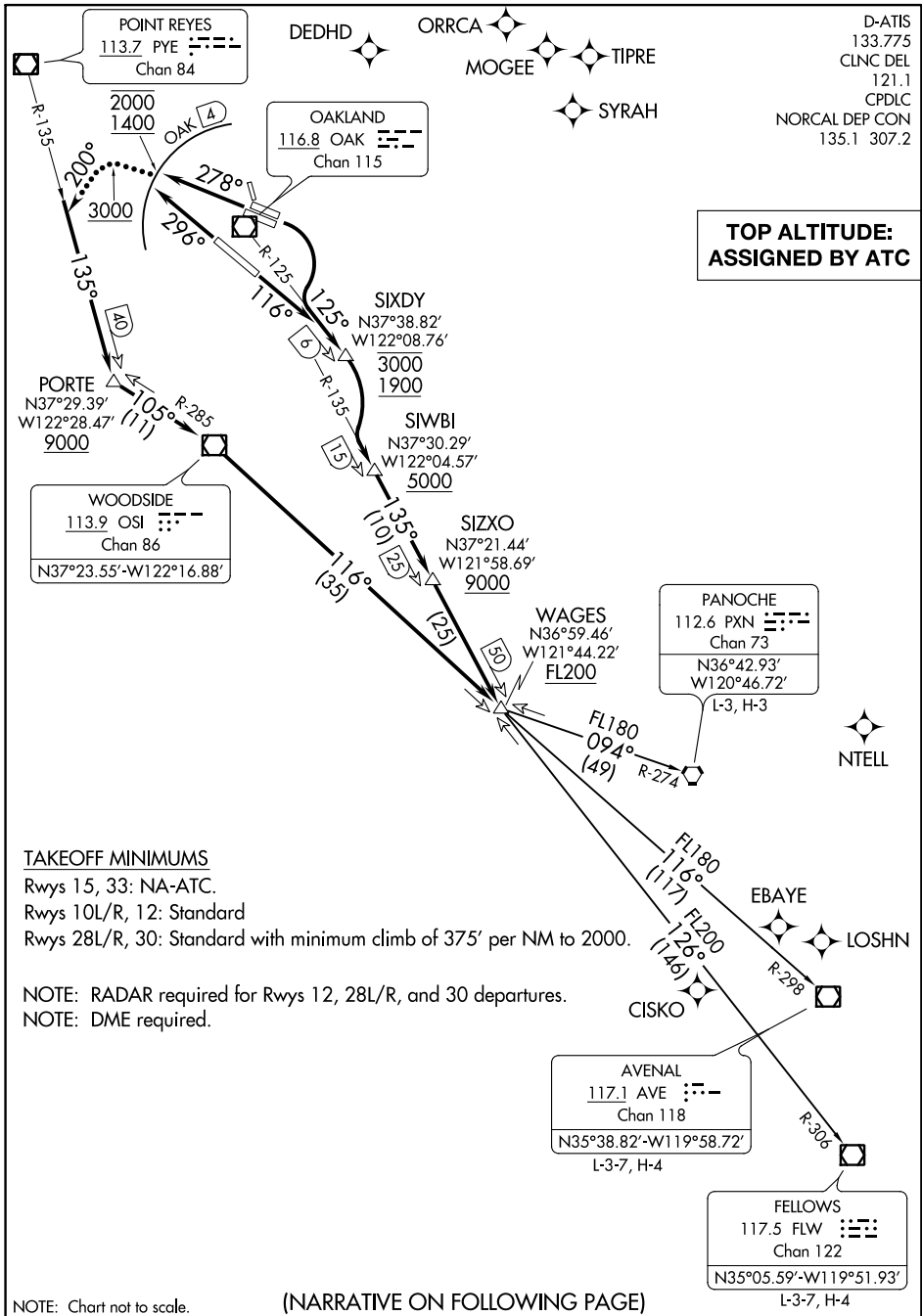


(SKYL1.WAGES) 19227
SKYLINE ONE DEPARTURE

AL-294 (FAA)

METROPOLITAN OAKLAND INTL (OAK)
 OAKLAND, CALIFORNIA



**TOP ALTITUDE:
 ASSIGNED BY ATC**

TAKEOFF MINIMUMS

Rwys 15, 33: NA-ATC.
 Rwys 10L/R, 12: Standard
 Rwys 28L/R, 30: Standard with minimum climb of 375' per NM to 2000.

NOTE: RADAR required for Rwys 12, 28L/R, and 30 departures.
 NOTE: DME required.

(NARRATIVE ON FOLLOWING PAGE)

SW-2, 10 OCT 2019 to 07 NOV 2019

SW-2, 10 OCT 2019 to 07 NOV 2019

(SKYL1.WAGES) 15AUG19
SKYLINE ONE DEPARTURE

OAKLAND, CALIFORNIA
 METROPOLITAN OAKLAND INTL (OAK)