

# HI-ILS or LOC/DME RWY 25

LOC I-PMD <b>110.7</b>	APCH CRS <b>254°</b>	Rwy ldg TDZE <b>2503</b> Arpt Elev <b>2543</b>
---------------------------	-------------------------	--

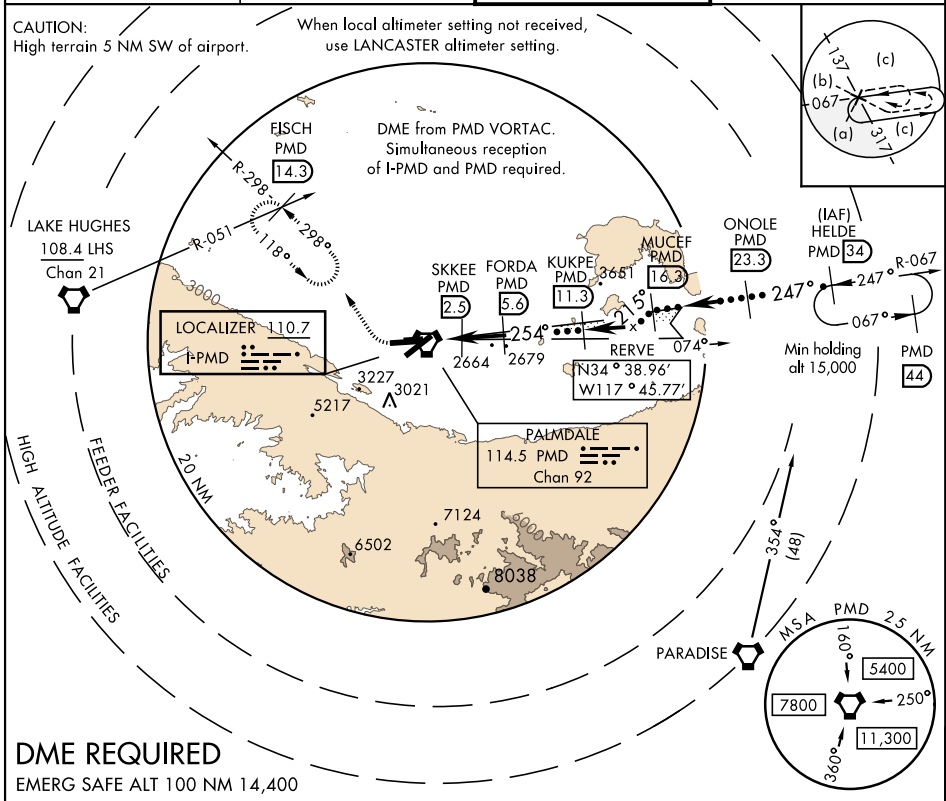
JAL-310 [USAF]

PALMDALE USAF PLANT 42 (KPMD)

**▼** \* Circling NA south of Rws 4 and 25.  
**▲**

MISSED APPROACH: Climb to 3000 then climbing right turn on heading 318° and PMD VORTAC R-298 to FISCH INT/PMD 14.3 DME/RADAR and hold, continue climb-in-hold to 6700.

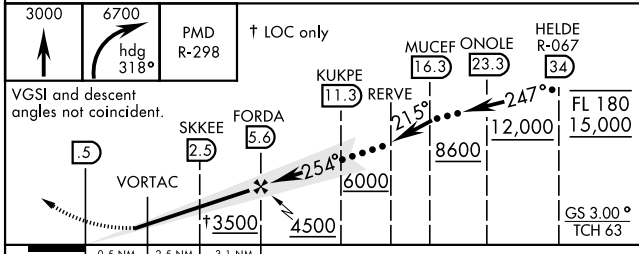
ATIS <b>118.275</b>	JOSHUA APP CON <b>124.55 363.0</b>	PALMDALE TOWER ★ <b>123.7 (CTAF) 0 317.6</b>	GND CON <b>121.9 348.6</b>
------------------------	---------------------------------------	---	-------------------------------



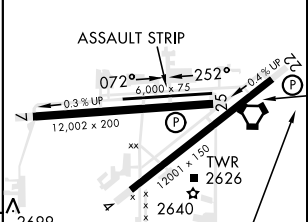
SW-3, 10 OCT 2019 to 07 NOV 2019

SW-3, 10 OCT 2019 to 07 NOV 2019

**DME REQUIRED**  
EMERG SAFE ALT 100 NM 14,400



ELEV 2543	TDZE 2503
-----------	-----------



CATEGORY	C	D	E
S-ILS 25		2703-¾	200 (200-¾)
S-LOC 25		2820-7/8	317 (300-7/8)
CIRCLING *	3140-1½	3740-3	3760-3
	597 (600-1½)	1197 (1200-3)	1217 (1300-3)

FAF to MAP 6.1 NM					
Knots	60	90	120	150	180
Min:Sec	6:06	4:04	3:03	2:26	2:02

# HI-ILS or LOC/DME RWY 25