

# HI-TACAN RWY 25

TACAN PMD Chan <b>92</b>	APCH CRS <b>265°</b>	Rwy ldg TDZE Arprt Elev <b>12,002</b> <b>2503</b> <b>2543</b>
-----------------------------	-------------------------	---

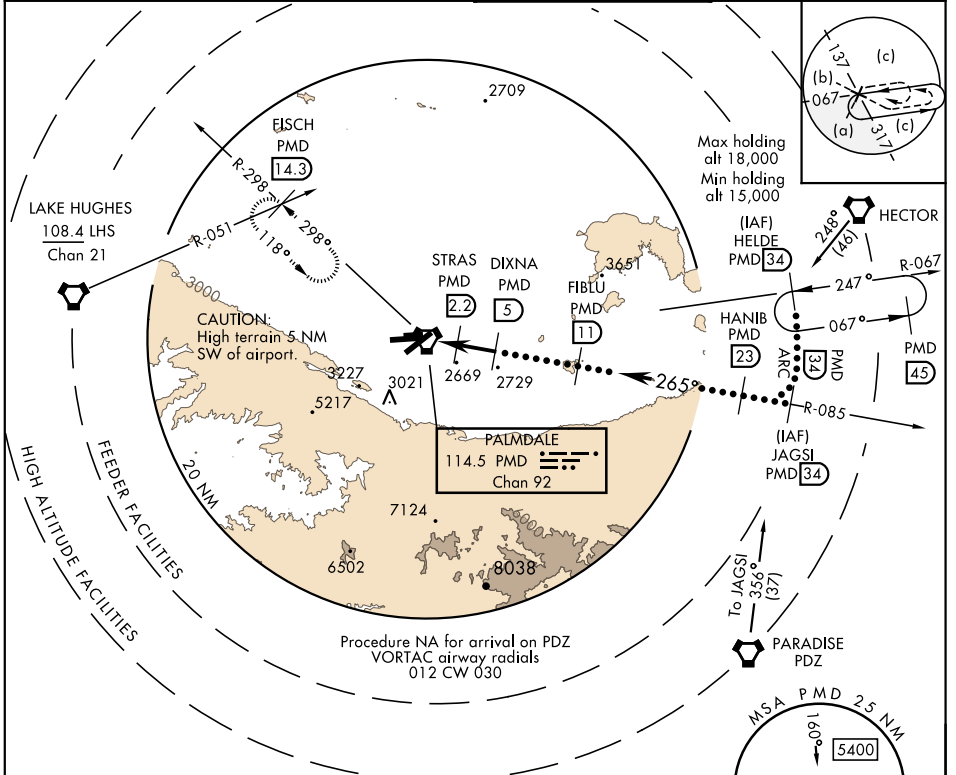
JAL-310 [USAF]

PALMDALE USAF PLANT 42 (KPMD)

▼ \* Circling NA S of Rwy 4 and 25.  
▲

MISSED APPROACH: Climb to 3000 then climbing right turn to 6700 on heading 318° on PMD VORTAC R-298 to FISCH INT/PMD 14.3 DME/RADAR and hold, continue climb-in-hold to 6700.

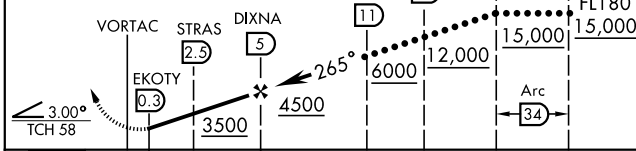
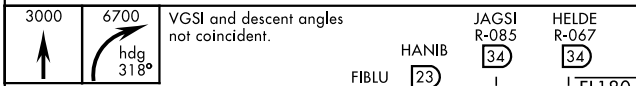
ATIS <b>118.275</b>	JOSHUA APP CON <b>124.55 363.0</b>	PALMDALE TOWER ★ <b>123.7 (CTAF) 0 317.6</b>	GND CON <b>121.9 348.6</b>
------------------------	---------------------------------------	---	-------------------------------



SW-3, 10 OCT 2019 to 07 NOV 2019

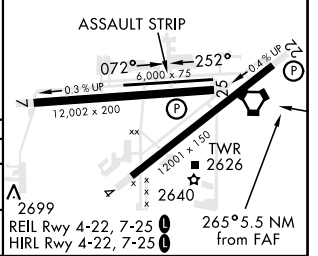
SW-3, 10 OCT 2019 to 07 NOV 2019

EMERG SAFE ALT 100 NM 14,400



CATEGORY	C	D	E
S-25	2840-1	337 (400-1)	
CIRCLING*	3140-1½ 597 (600-1½)	3740-3 1197 (1200-3)	3760-3 1217 (1300-3)

ELEV 2543	TDZE 2503
-----------	-----------



# HI-TACAN RWY 25