

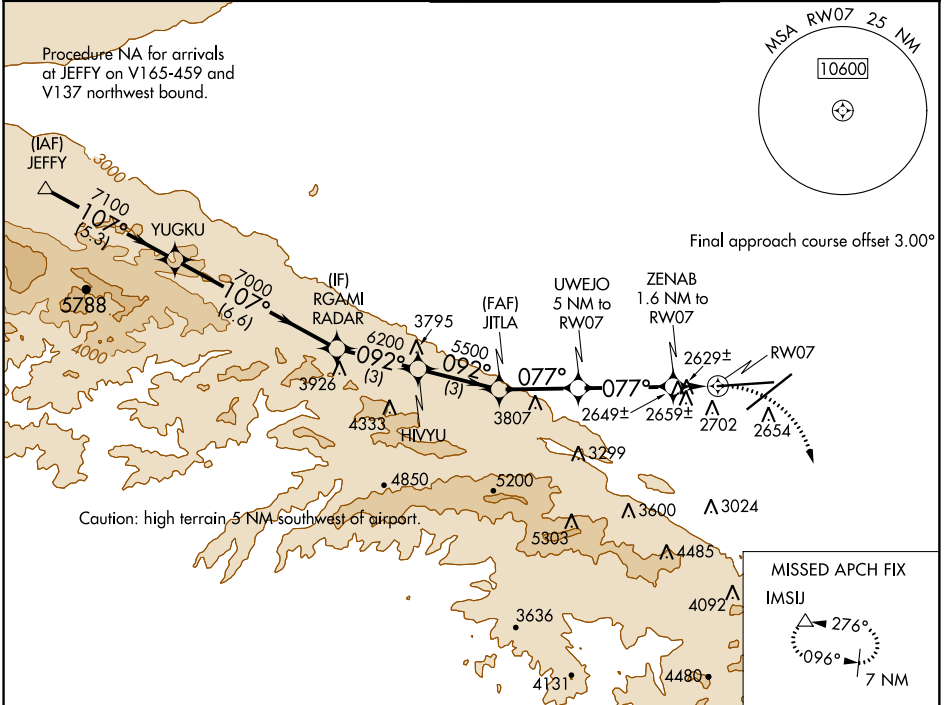
WAAS CH 53441 W07A	APP CRS 077°	Rwy ldg 12002 TDZE 2540 Apt Elev 2543
--	------------------------	--

RNAV (GPS) RWY 7

PALMDALE USAF PLANT 42 (PMD)

<p>⚠ Circling NA for Cats C and D south of Rwy 4 and 25. DME/DME RNP-0.3 NA.</p>	<p>MISSED APPROACH: Climbing right turn to 7000 direct IMSIJ and hold.</p>
---	--

<p>ATIS 118.275</p>	<p>JOSHUA APP CON 124.55 363.0</p>	<p>PALMDALE TOWER * 123.7 (CTAF) 0 317.6</p>	<p>GND CON 121.9 317.6</p>
--------------------------------	---	---	---------------------------------------



SW-3, 10 OCT 2019 to 07 NOV 2019

SW-3, 10 OCT 2019 to 07 NOV 2019

ELEV 2543	TDZE 2540
-----------	-----------

	JEFFY	YUGKU	RGAMI	HIVYU	JTILA	UWEJO	ZENAB	7000	IMSIJ
	8000	7100	7000	6200	5500	4440	3180	3180	3180
		107°	092°	092°	077°	077°	077°	077°	077°
		5.3 NM	6.6 NM	3 NM	3 NM	2.8 NM	3.4 NM	0.8 NM	0.8 NM
CATEGORY	A		B		C		D		
LP MDA	2880-1		340 (400-1)						
LNAV MDA	2920-1		380 (400-1)						
CIRCLING	3020-1 477 (500-1)	3060-1 517 (600-1)	3140-1½ 597 (600-1½)	3740-3 1197 (1200-3)					

