

# JIIIMS THREE ARRIVAL (RNAV)

PHILADELPHIA, PENNSYLVANIA

NE-4, 10 OCT 2019 to 07 NOV 2019

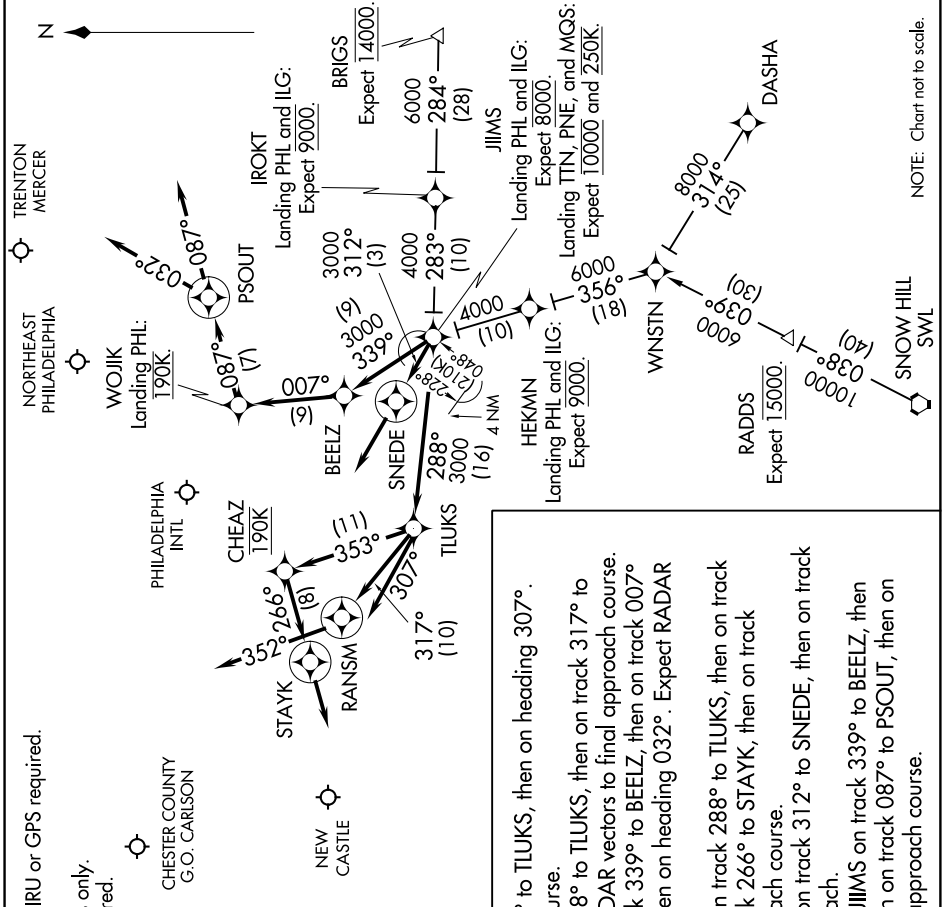
NOTE: DME/DME/IRU or GPS required.  
 NOTE: RNAV 1.  
 NOTE: For turbojets only.  
 NOTE: Radar required.

PHILADELPHIA INTL  
 D-ATIS ARR 133.4  
 NORTHEAST PHILADELPHIA  
 ATIS 121.15  
 TRENTON MERCER  
 ATIS 126.775  
 NEW CASTLE ATIS 123.95  
 CHESTER COUNTY G.O. CARLSON  
 AWOS-3 126.25  
 PHILADELPHIA APP CON  
 133.875 317.55

### ARRIVAL ROUTE DESCRIPTION

**BRIGS TRANSITION (BRIGS.JIIMS3):**  
**DASHA TRANSITION (DASHA.JIIMS3):**  
**SNOW HILL TRANSITION (SWL.JIIMS3):**

Landing ILG: From over JIIIMS on track 288° to TLUKS, then on heading 307°. Expect RADAR vectors to final approach course.  
 Landing MGS: From over JIIIMS on track 288° to TLUKS, then on track 317° to RANSW, then on heading 352°. Expect RADAR vectors to final approach course.  
 Landing PNE, TTN: From over JIIIMS on track 339° to BEEZ, then on track 007° to WOJJK, then on track 087° to PSOUT, then on heading 032°. Expect RADAR vectors to final approach course.  
 Landing PHL Rwy 9L, 9R: From over JIIIMS on track 288° to TLUKS, then on track 353° to cross CHEAZ at 190K, then on track 266° to STAYK, then on track 266°. Expect RADAR vectors to final approach course.  
 Landing PHL Rwy 17, 35: From over JIIIMS on track 312° to SNEDE, then on track 312°. Expect RADAR vectors to final approach.  
 Landing PHL Rwy 26, 27L, 27R: From over JIIIMS on track 339° to BEEZ, then on track 007° to cross WOJJK at 190K, then on track 087° to PSOUT, then on track 087°. Expect RADAR vectors to final approach course.



# JIIIMS THREE ARRIVAL (RNAV)

PHILADELPHIA, PENNSYLVANIA

NE-4, 10 OCT 2019 to 07 NOV 2019