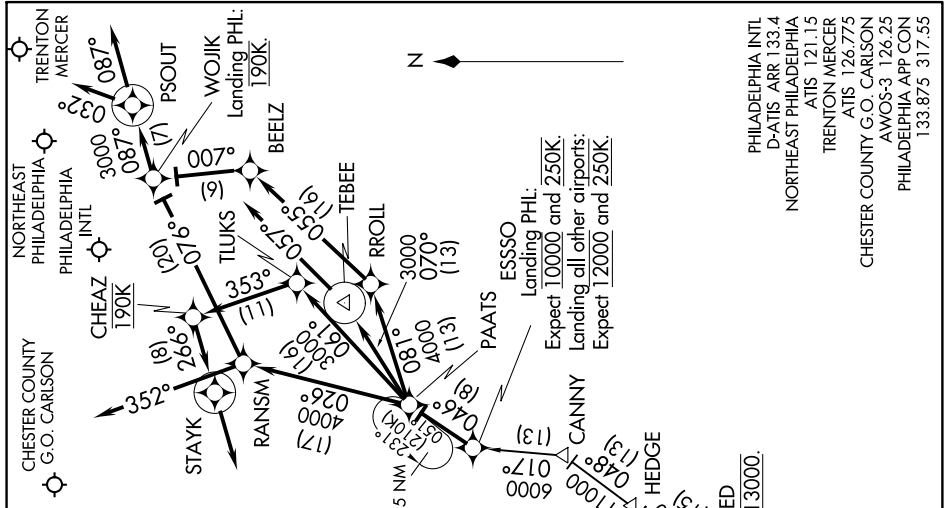


# PAATS THREE ARRIVAL (RNAV)

PHILADELPHIA, PENNSYLVANIA

NE-4, 10 OCT 2019 to 07 NOV 2019



**ARRIVAL ROUTE DESCRIPTION**

FLAT ROCK TRANSITION (FAK.PAATS3):  
GORDONSVILLE TRANSITION (GVE.PAATS3):  
PATUXENT TRANSITION (PXT.PAATS3):

From over ESSO on track 046° to PAATS thence....

Landing MQS: From over PAATS on track 026° to RANSM, then on heading 352°. Expect RADAR vectors to final approach course.

Landing PNE, ITIN: From over PAATS on track 026° to RANSM, then on track 076° to WOJIK, then on track 087° to PSOUT, then on heading 032°. Expect RADAR vectors to final approach course.

Landing PHL Rwy 9L, 9R: From over PAATS on track 061° to TLUKS, then on track 353° to cross CHEAZ at 190K, then on track 266° to STAYK, then on track 266°. Expect RADAR vectors to final approach course.

Landing PHL Rwy 17, 35: From over PAATS on track 070° to TEBEE, then on heading 057°. Expect RADAR vectors to final approach course.

Landing PHL Rwy 26, 27L, 27R: From over PAATS on track 081° to ROLL, then on track 055° to BEELZ, then on track 007° to cross WOJIK at 190K, then on track 087° to PSOUT, then on track 087°. Expect RADAR vectors to final approach course.

JAYBO Expect 15000.  
 14000 087° (35)  
 10 NM  
 BUKKY 056° (178)  
 10 NM  
 GORDONSVILLE GVE 070° (178)  
 1700  
 SHONA 1201  
 048° (170)  
 10 NM  
 PATUXENT PXT 15000 048° (30)  
 Expect 13000.  
 GARED  
 HEDGE 12000 048° (113)  
 1000  
 CANNY 6000 017° (13)  
 Expect 10000 and 250K.  
 Landing PHIL: Expect 12000 and 250K.  
 ESSO Landing PHIL: Expect 10000 and 250K.  
 PAATS 4000 070° (113)  
 3000  
 ROLL 3000 070° (113)  
 TEBEE 3000 057° (113)  
 TLUKS 3000 057° (113)  
 STAYK 4000 026° (17)  
 RANSM 4000 026° (17)  
 CHEAZ 190K  
 PSOUT 3000 087° (113)  
 WOJIK Landing PHIL: 190K  
 BEELZ 190K  
 PHILADELPHIA INTL D-ATIS ARR 133.4  
 NORSEAST PHILADELPHIA ATIS 121.15  
 TRENTON MERCER ATIS 126.775  
 CHESTER COUNTY G.O. CARLSON AWOS-3 126.25  
 PHILADELPHIA APP CON 133.875 317.55

NOTE: DME/DME/IRU or GPS required.  
 NOTE: RNAV 1.  
 NOTE: For turbojets only.  
 NOTE: PXT transition as assigned by ATC.  
 NOTE: RADAR required.

NOTE: Chart not to scale.

# PAATS THREE ARRIVAL (RNAV)

PHILADELPHIA, PENNSYLVANIA

NE-4, 10 OCT 2019 to 07 NOV 2019