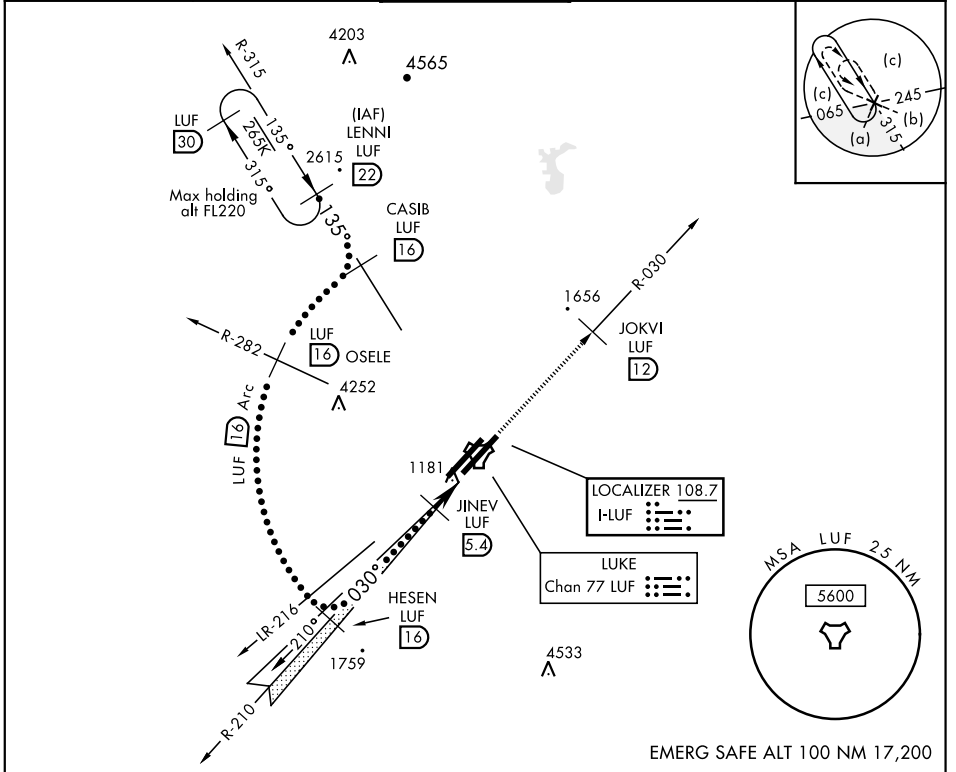


# HI-ILS or LOC/DME RWY 3R

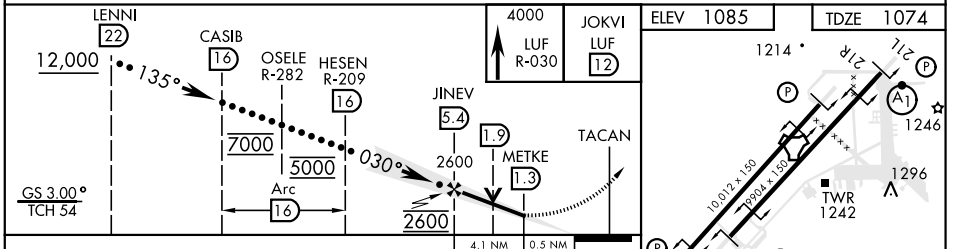
LOC I-LUF <b>108.7</b>	APCH CRS <b>030°</b>	Rwy Idg <b>9904</b> TDZE <b>1074</b> Arprt Elev <b>1085</b>	JAL-321 [USAF]	LUKE AFB (KLUF)
---------------------------	-------------------------	--	----------------	-----------------

* When ALS inop, increase RVR to 40 and vis to 3/4 mile. ** When ALS inop, increase RVR to 60 and vis 1/8 miles.	ALSF-1 	MISSED APPROACH: Climbing to 4000, intercept LUF TACAN R-030 to 12 DME (JOKVI). Contact LUKE APP CON.
---	------------	--

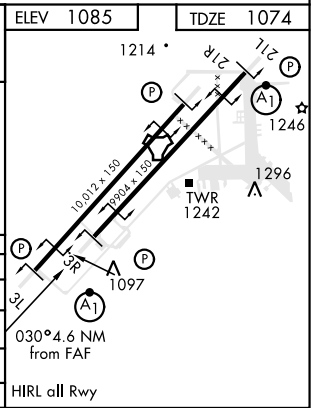
ATIS ★ <b>134.925 269.9</b>	LUKE APP CON <b>118.15 363.125</b>	LUKE TOWER ★ <b>119.1 379.9</b>	GND CON <b>133.175 335.8</b>	CLNC DEL <b>126.25 273.475</b>
--------------------------------	---------------------------------------	------------------------------------	---------------------------------	-----------------------------------



EMERG SAFE ALT 100 NM 17,200



CATEGORY	C	D	E
S-ILS 3R *	1274/24	200	(200-1/2)
S-LOC/DME 3R **	1480/40	406	(400-3/4)
SIDESTEP 3L	1520-2 1/2	443	(500-2 1/2)
CIRCLING	NOT AUTHORIZED		



# HI-ILS or LOC/DME RWY 3R

SW-4, 10 OCT 2019 to 07 NOV 2019

SW-4, 10 OCT 2019 to 07 NOV 2019