

12180

# NORDY-ONE DEPARTURE (NORDY1 • NORDY)

SH-321 [USAF]

LUKE AFB (KLUF)

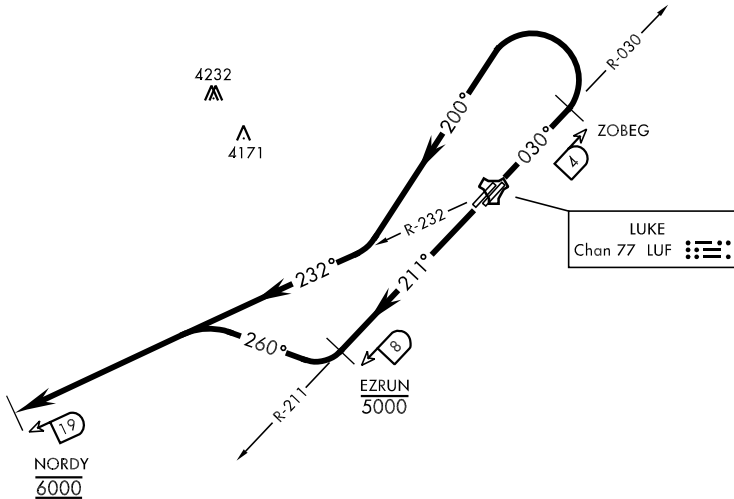
GLENDALE, ARIZONA

ATIS ★ 134.925 269.9  
 CLNC DEL  
 126.25 273.475  
 GND CON  
 133.175 335.8  
 LUKE TOWER ★  
 119.1 379.9  
 LUKE DEP CON  
 118.15 363.125

Rwy	Knots	120	180	240	300	360
3L/R *	V/V(fpm)	700	1050	1400	1750	2100
21L/R †	V/V(fpm)	560	840	1120	1400	1680

\* Minimum Climb Rate to 6000

† ATC Climb Rate to 6000



SW-4, 10 OCT 2019 to 07 NOV 2019

SW-4, 10 OCT 2019 to 07 NOV 2019

### RADAR REQUIRED

4276  
▲



### DEPARTURE ROUTE DESCRIPTION

**TAKE-OFF RWY 3L/R:** Climb tracking 030°. Abeam LUF TACAN R-030/4 DME (ZOBEG) turn left on a track of 200° to intercept and proceed via LUF R-232 to 19 DME (NORDY). Then via (assigned route/stereo). Cross NORDY at and maintain 6000 (or as assigned by ATC).

**TAKE-OFF RWY 21L/R:** Climb tracking 211°. Abeam LUF TACAN R-211/8 DME (EZRUN) turn right on a track of 260° to intercept and proceed via LUF R-232 to 19 DME (NORDY). Then via (assigned route/stereo). Cross 8 DME at or below 5000, cross NORDY at and maintain 6000 (or as assigned by ATC).

# NORDY-ONE DEPARTURE (NORDY1 • NORDY)

GLENDALE, ARIZONA

LUKE AFB (KLUF)