

TANKZ-ONE DEPARTURE

SH-321 [USAF]

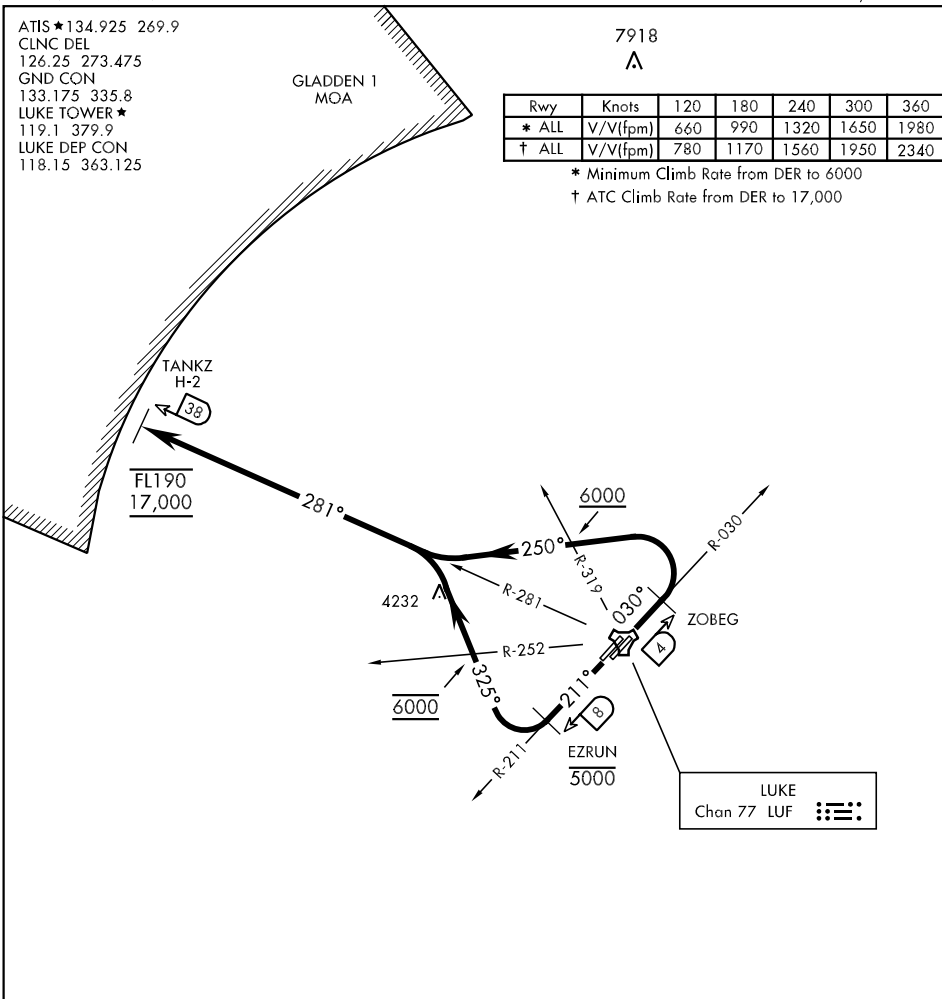
LUKE AFB (KLUF)
GLENDALE, ARIZONA

ATIS ★ 134.925 269.9
 CLNC DEL
 126.25 273.475
 GND CON
 133.175 335.8
 LUKE TOWER ★
 119.1 379.9
 LUKE DEP CON
 118.15 363.125

7918
 ⚠

Rwy	Knots	120	180	240	300	360
* ALL	V/V(fpm)	660	990	1320	1650	1980
† ALL	V/V(fpm)	780	1170	1560	1950	2340

* Minimum Climb Rate from DER to 6000
 † ATC Climb Rate from DER to 17,000



SW-4, 10 OCT 2019 to 07 NOV 2019

SW-4, 10 OCT 2019 to 07 NOV 2019

DEPARTURE ROUTE DESCRIPTION

TAKE-OFF RWY 3 L/R: Climb on a track of 030°. Abeam LUF TACAN R-030/04 (ZOBEG) turn left heading 250° to intercept and proceed via LUF R-281 to 38 DME (TANKZ). Cross LUF R-319 at or above 6000. Cross TANKZ at or above 17,000 and below FL190 (or as assigned by ATC).

TAKE-OFF RWY 21 L/R: Climb on a track of 211°. Abeam LUF TACAN R-211/08 (EZRUN) turn right heading 325° to intercept and proceed via LUF R-281 to 38 DME (TANKZ). Cross 8 DME at or below 5000. Cross LUF R-252 at 6000. Cross TANKZ at or above 17,000 and below FL190 (or as assigned by ATC).

TANKZ-ONE DEPARTURE

GLENDALE, ARIZONA
LUKE AFB (KLUF)