

# TIRON-SEVEN DEPARTURE (TIRON7)

SH-321 [USAF]

LUKE AFB (KLUF)

GLENDALE, ARIZONA

ATIS ★ 134.925 269.9  
 CLNC DEL  
 126.25 273.475  
 GND CON  
 133.175 335.8  
 LUKE TOWER ★  
 119.1 379.9  
 LUKE DEP CON  
 118.15 363.125

BAGDAD 1  
 MOA

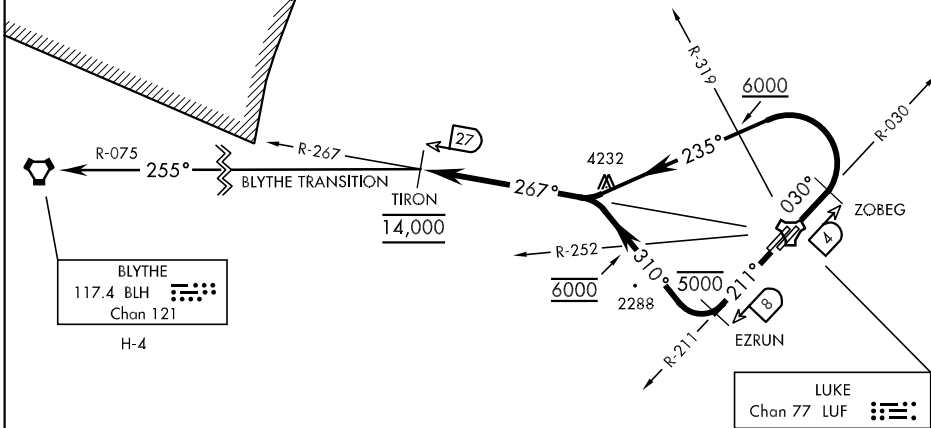
Rwy	Knots	120	180	240	300	360
* 3 L/R	V/V(fpm)	700	1050	1400	1750	2100
† 3 L/R	V/V(fpm)	860	1290	1720	2150	2580
* 21 L/R	V/V(fpm)	640	960	1280	1600	1920
† 21 L/R	V/V(fpm)	910	1360	1810	2260	2720

\* Minimum Climb Rate from DER to 6000.

† ATC Climb Rates from DER to 14,000

GLADDEN 1  
 MOA

SW-4, 10 OCT 2019 to 07 NOV 2019



SW-4, 10 OCT 2019 to 07 NOV 2019

## DEPARTURE ROUTE DESCRIPTION

**TAKE-OFF RWY 3 L/R:** Climb tracking 030°. Abeam LUF TACAN R-030/04 DME (ZOBEG) turn left heading 235° to intercept and proceed via LUF R-267 to LUF 27 DME (TIRON). Cross LUF R-319 at or above 6000. Cross TIRON at 14,000 (or as assigned by ATC). Then via assigned route or transition.

**TAKE-OFF RWY 21 L/R:** Climb tracking 211°. Abeam LUF TACAN R-211/08 DME (EZRUN) turn right heading 310° to intercept and proceed via LUF R-267 to LUF 27 DME (TIRON). Cross abeam EZRUN at or below 5000. Cross LUF R-252 at 6000, Cross TIRON at 14,000 (or as assigned by ATC). Then via assigned route or transition.

**BLYTHE TRANSITION (TIRON7•BLH):** Via the BLH VORTAC R-075 to BLH.

# TIRON-SEVEN DEPARTURE (TIRON7)

GLENDALE, ARIZONA

LUKE AFB (KLUF)