

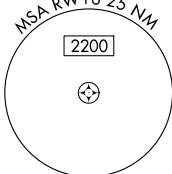
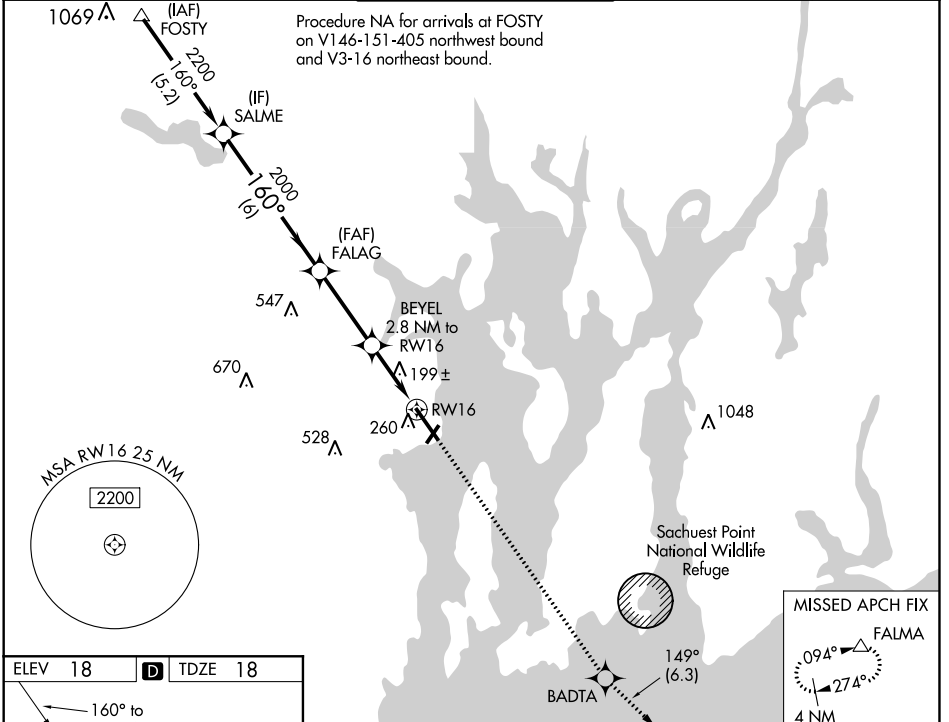
WAAS CH 93705 W16A	APP CRS 160°	Rwy Idg 7100 TDZE 18 Apt Elev 18
--	------------------------	---

RNAV (GPS) RWY 16

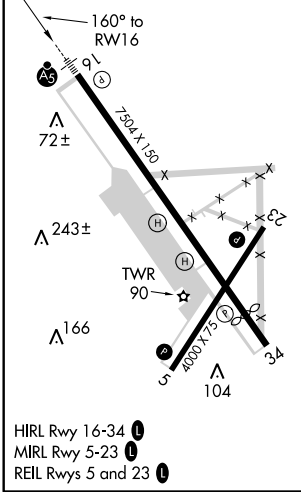
QUONSET STATE (OQU)

<p>⚠ For uncompensated Baro-VNAV systems, LNAV/VNAV NA below -1.5°C (5°F) or above 54°C (130°F). Circling Rwy 5 NA at night. DME/DME RNP-0.3 NA.</p>	<p>MALSR AS</p>	<p>MISSED APPROACH: Climb to 3000 direct BADTA and on track 149° to FALMA and hold.</p>
---	----------------------------	---

ATIS * 118.6	PROVIDENCE APP CON * 123.675 244.875	QUONSET TOWER * 126.35 (CTAF) 0 252.9	GND CON 134.5 275.8	UNICOM 122.95
------------------------	--	---	-------------------------------	-------------------------

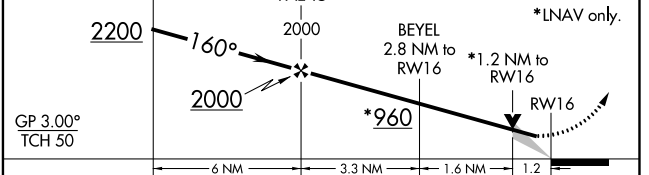


ELEV 18	D	TDZE 18
---------	----------	---------



- HIRL Rwy 16-34 **Ⓛ**
- MIRL Rwy 5-23 **Ⓛ**
- REIL Rwy 5 and 23 **Ⓛ**

VGSI and RNAV glidepath not coincident (VGSI Angle 3.00/TCH 58).			
SALME	FALAG	BADTA	FALMA
		↑ 3000	ir 149°



CATEGORY	A	B	C	D
LPV DA		218- ¹ / ₂	200 (200- ¹ / ₂)	
LNAV/VNAV DA		442- ³ / ₄	424 (500- ³ / ₄)	
LNAV MDA		460- ¹ / ₂	442 (500- ¹ / ₂)	
C CIRCLING	620-1	602 (700-1)	620- ¹ / ₄ 602 (700- ¹ / ₄)	880-2 ³ / ₄ 862 (900-2 ³ / ₄)

NE-1, 10 OCT 2019 to 07 NOV 2019

NE-1, 10 OCT 2019 to 07 NOV 2019