

(HARTT.HARTT1) 17173

# HARTT ONE ARRIVAL (RNAV)

AL-346 (FAA)

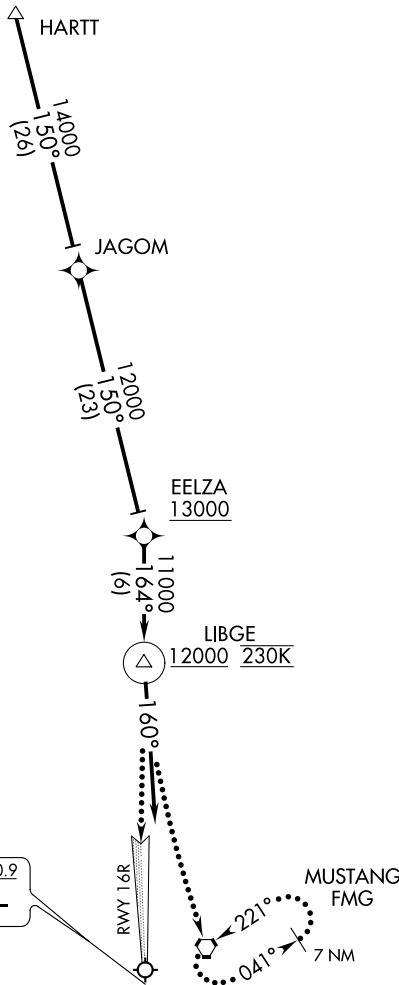
RENO/TAHOE INTL (RNO)  
RENO, NEVADA

D-ATIS  
 135.8 363.0  
 RENO TOWER  
 118.7 257.8  
 NORCAL APP CON  
 119.2 279.55  
 126.3 353.9

SW-4, 10 OCT 2019 to 07 NOV 2019

SW-4, 10 OCT 2019 to 07 NOV 2019

**CAUTION: Intense  
Glider Activity  
to FL180.**



LOCALIZER 110.9  
 I-RNO  
 Chan 46

- NOTE: GPS required.
- NOTE: RNAV 1.
- NOTE: Cross EELZA at or above 13000.
- NOTE: Cross LIBGE at or above 12000 at 230 KTS.

NOTE: Chart not to scale.

## ARRIVAL ROUTE DESCRIPTION

From HARTT on track 150° to JAGOM, then on track 150° to cross EELZA at or above 13000, then on track 164° to cross LIBGE at or above 12000 at 230 KTS. Then on heading 160° expect ILS RWY 16R or RADAR vectors.

## LOST COMMUNICATIONS

At LIBGE, proceed inbound via RWY 16R ILS approach. If unable, climbing left turn to 12000 direct FMG VORTAC and hold.

**HARTT ONE ARRIVAL (RNAV)**  
(HARTT.HARTT1) 25AUG11

RENO, NEVADA  
RENO/TAHOE INTL (RNO)