

LOC/DME I-AGY 109.9 Chan 36	APP CRS 344°	Rwy Idg 10002 TDZE 4410 Apt Elev 4415
---	------------------------	--

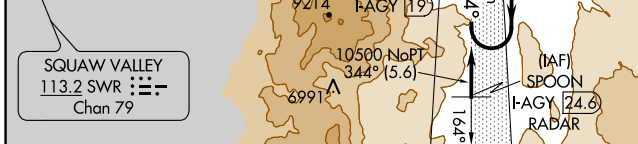
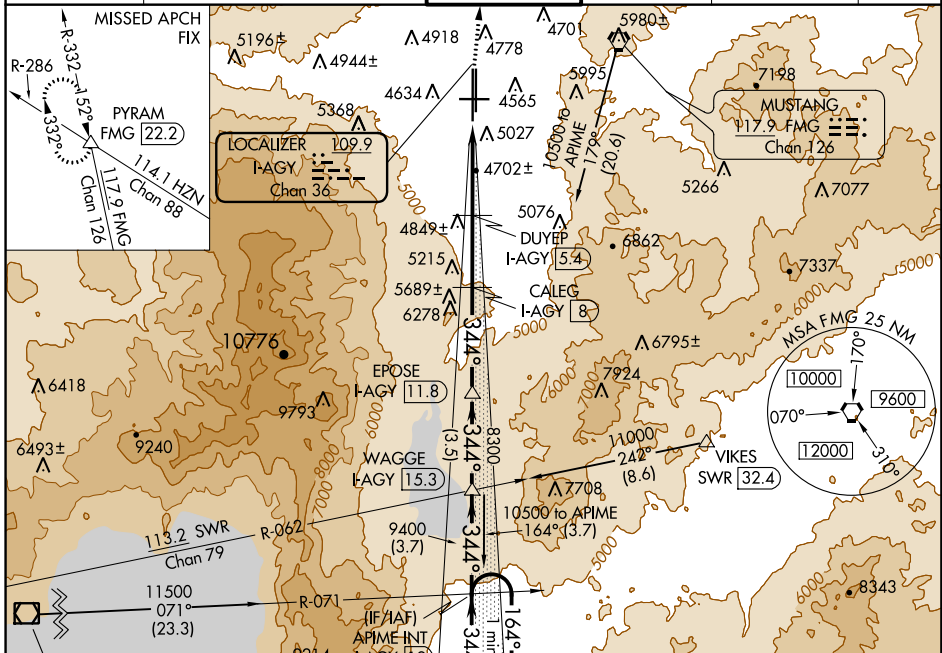
ILS or LOC/DME RWY 34L

RENO/TAHOE INTL (RNO)

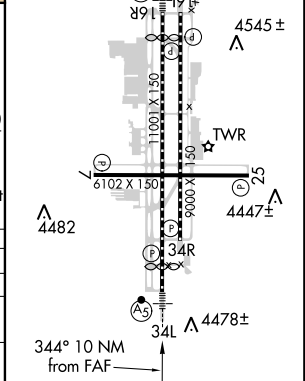
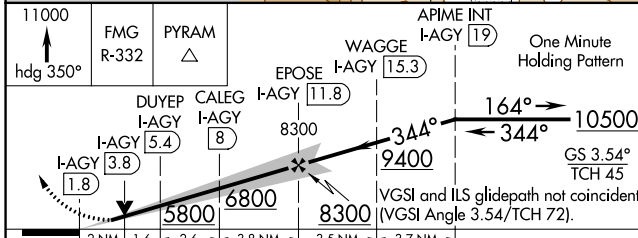
⚠ Inoperative table does not apply.
If local altimeter setting not received, procedure NA.
⚠ Circling Rwy 7 NA at night.

MALSR MISSED APPROACH: Climb to 11000 via heading 350° and FMG VORTAC R-332 to PYRAM INT/FMG 22.2 DME and hold, continue climb-in-hold to 11000.

D-ATIS 135.8 363.0	NORCAL APP CON 119.2 279.55 126.3 353.9	RENO TOWER 118.7 257.8	GND CON 121.9 348.6	CLNC DEL 124.9 370.85	CPDLC
------------------------------	---	----------------------------------	-------------------------------	---------------------------------	-------



ELEV 4415	D	TDZE 4410
HIRL Rwys 16R-34L and 16L-34R		
REIL Rwys 7, 16L, 25, and 34R		
MIRL Rwy 7-25		
Λ 4474±		



CATEGORY	A	B	C	D
S-ILS 34L	4946-1½ 536 (600-1½)			NA
S-LOC 34L	5120-1 710 (800-1)		5120-2 710 (800-2)	NA
CIRCLING	5340-1¼ 925 (1000-1¼)		5340-2¾ 925 (1000-2¾)	NA

SW-4, 10 OCT 2019 to 07 NOV 2019

SW-4, 10 OCT 2019 to 07 NOV 2019