

LOC/DME I-RNO 110.9 Chan 46	APP CRS 164°	Rwy Idg TDZE Apt Elev 10001 4415 4415
---	------------------------	---

ILS Y RWY 16R

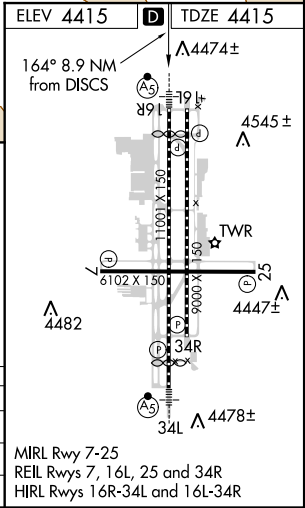
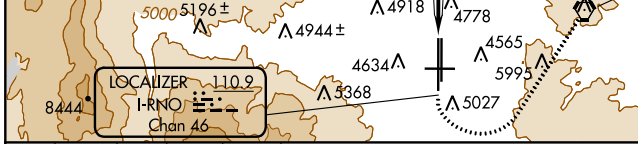
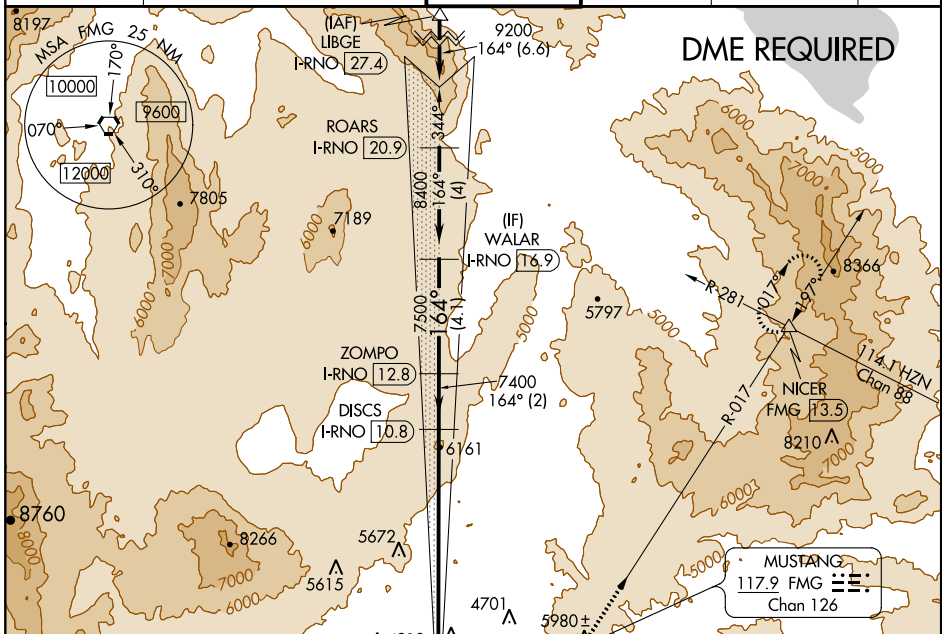
RENO/TAHOE INTL (RNO)

Inop table does not apply.
† For inop MALSR, increase
-15°C S-ILS R16R all Cats
visibility to 1 1/8 mile.

MALSR
AS

MISSED APPROACH: Climb to 6300 then climbing left turn to 11000 direct FMG VORTAC and on FMG VORTAC R-017 to NICER INT/FMG 13.5 DME and fld.
* Missed approach requires a minimum climb of 350 feet per NM to 8000.
** Missed approach requires a minimum climb of 275 feet per NM to 8000.

D-ATIS 135.8 363.0	NORCAL APP CON 119.2 279.55 126.3 353.9	RENO TOWER 118.7 257.8	GND CON 121.9 348.6	CLNC DEL 124.9 370.85	CPDLC
------------------------------	---	----------------------------------	-------------------------------	---------------------------------	-------



6300	11000	FMG	NICER	ZOMPO	WALAR
↑	↙	◻	△	I-RNO [12.8]	I-RNO [16.9]
VGSI and descent angles not coincident (VGSI Angle 3.06/TCH 77).		FMG R-017	DISCS I-RNO [10.8]		
			7400	7500	8400
			7400	7500	8400
			8.9 NM	2 NM	4.1 NM
					GS 3.10% TCH 59
CATEGORY	A	B	C	D	E
S-ILS 16R *†		4915/60	500 (500-1 1/4)		
S-ILS 16R **#		5415-4	1000 (1000-4)		
S-ILS 16R #		5915-6	1500 (1500-6)		

MIRL Rwy 7-25
REIL Rwys 7, 16L, 25 and 34R
HIRL Rwys 16R-34L and 16L-34R

SW-4, 10 OCT 2019 to 07 NOV 2019

SW-4, 10 OCT 2019 to 07 NOV 2019