


LOC/DME I-RNO <b>110.9</b> Chan <b>46</b>	APP CRS <b>164°</b>	Rwy Idg <b>10011</b> TDZE <b>4415</b> Apt Elev <b>4415</b>
---	------------------------	--

# ILS Z or LOC Z RWY 16R

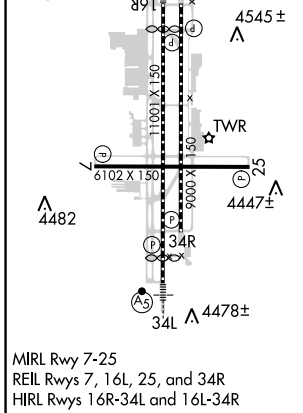
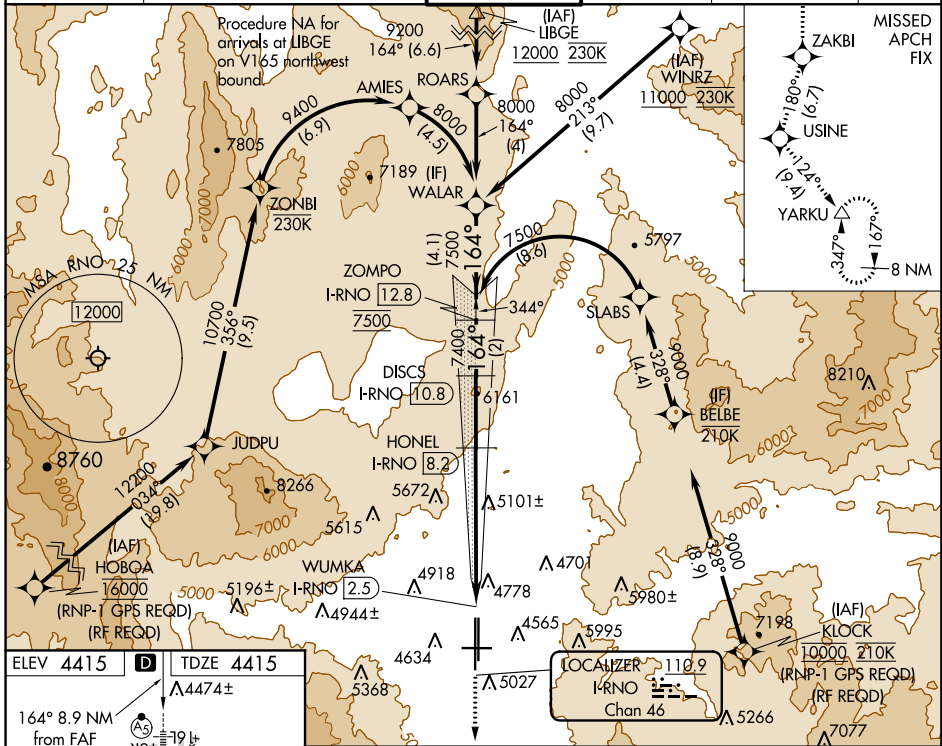
RENO/TAHOE INTL (RNO)

**⚠** Circling Rwy 7 NA at night. DME/DME RNP-0.3 NA. DME required. RNAV 1-GPS required.  
**⚠** -15°C # For inop MALS/R, increase S-ILS 16R all Cats visibility to 2 1/2 mile.  
 † RVR 1800 authorized with use of FD or AP or HUD to DA.

**MALS/R**  


**MISSED APPROACH:** Climb to 13000 on the RNAV missed approach route to YARKU and hold, continue climb-in-hold to 13000.  
 † Missed approach requires a minimum climb of 390 feet per NM to 8000.

D-ATIS <b>135.8 363.0</b>	NORCAL APP CON <b>119.2 279.55 126.3 353.9</b>	RENO TOWER <b>118.7 257.8</b>	GND CON <b>121.9 348.6</b>	CLNC DEL <b>124.9 370.85</b>	CPDLC
------------------------------	---	----------------------------------	-------------------------------	---------------------------------	-------



ELEV 4415	TDZE 4415	13000 ZAKBI		USINE		YARKU		VGSI and ILS glidepath not coincident (VGSI Angle 3.06/TCH 77).	
164° 8.9 NM from FAF	4447±	↑	✧ 180°	✧	△	DISCS I-RNO 10.8		ZOMPO I-RNO 12.8	
4545±	4478±	See planview for multiple IF locations.		* I-RNO 4.7		HONEL I-RNO 8.2		WALAR	
4482	4447±	WUMKA I-RNO 2.5		* LOC only.		7400		8000	
4478±	4478±	0.6		-2.2 NM		-2.6 NM		-2 NM	
4478±	4478±	CATEGORY		A		B		C	
4478±	4478±	S-ILS 16R †		4615/24		200 (200-1/2)			
4478±	4478±	S-ILS 16R #		5138-1 7/8		723 (800-1 7/8)			
4478±	4478±	S-LOC 16R		5420/40		5420/55		5420-2 1/2 1005 (1100-2 1/2)	
4478±	4478±	CIRCLING		5420-1 1/4		5420-1 1/2		6480-3 2065 (2100-3)	

SW-4, 10 OCT 2019 to 07 NOV 2019

SW-4, 10 OCT 2019 to 07 NOV 2019