

(KENNO.KENNO2) 17173

KENNO TWO ARRIVAL (RNAV)

AL-346 (FAA)

RENO/TAHOE INTL (RNO)

RENO, NEVADA

D-ATIS

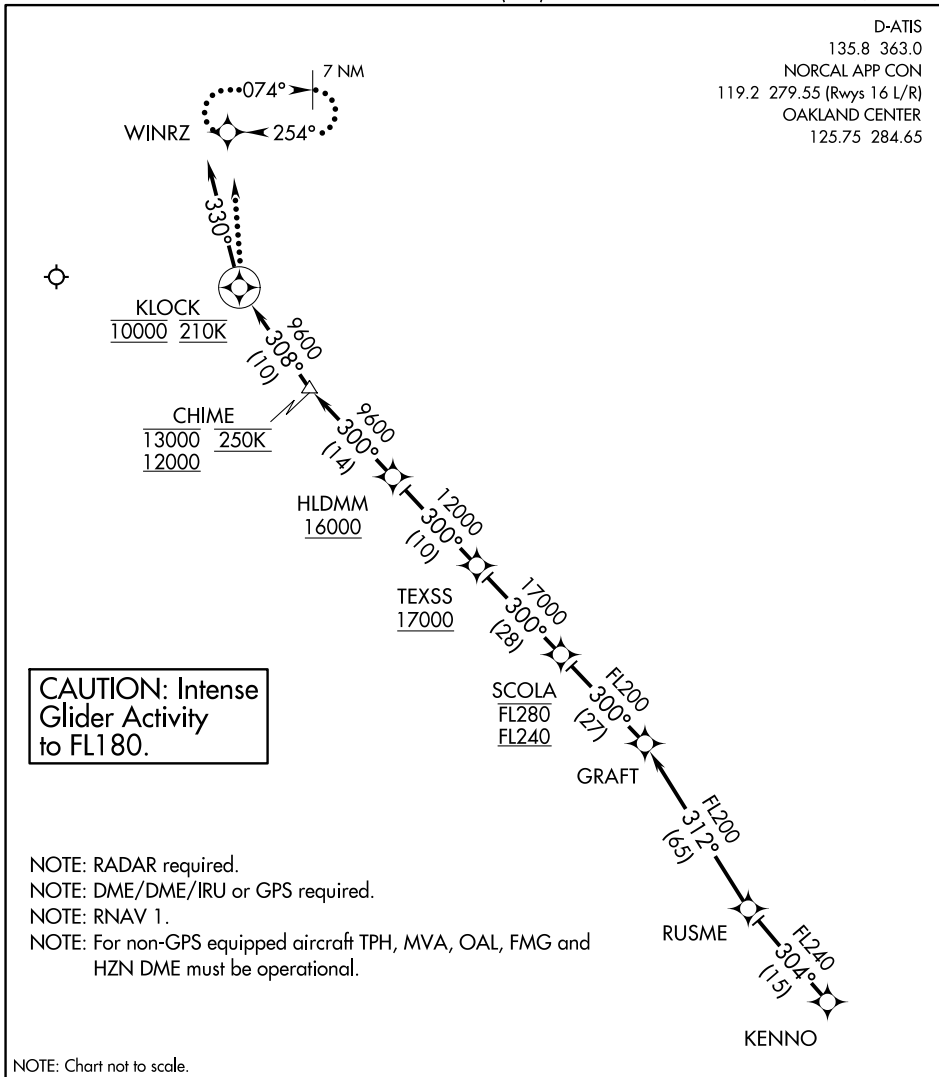
135.8 363.0

NORCAL APP CON

119.2 279.55 (Rwys 16 L/R)

OAKLAND CENTER

125.75 284.65



**CAUTION: Intense
Glider Activity
to FL180.**

NOTE: RADAR required.

NOTE: DME/DME/IRU or GPS required.

NOTE: RNAV 1.

NOTE: For non-GPS equipped aircraft TPH, MVA, OAL, FMG and HZN DME must be operational.

NOTE: Chart not to scale.

ARRIVAL ROUTE DESCRIPTION

From KENNO on track 304° to RUSME, then as depicted to cross KLOCK at 10000' at 210K, then on heading 330°. Rwy 16L/16R expect RADAR vectors to final approach course.

LOST COMMUNICATIONS:

At KLOCK, turn right direct to WINRZ and hold, maintain 10000'.

KENNO TWO ARRIVAL (RNAV)

(KENNO.KENNO2) 31MAY12

RENO, NEVADA

RENO/TAHOE INTL (RNO)

SW-4, 10 OCT 2019 to 07 NOV 2019

SW-4, 10 OCT 2019 to 07 NOV 2019