

# RNAV (RNP) Z RWY 34L

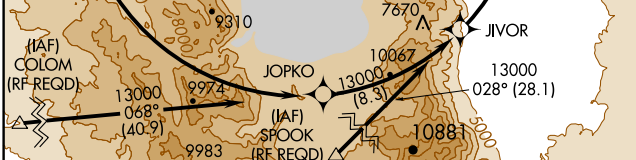
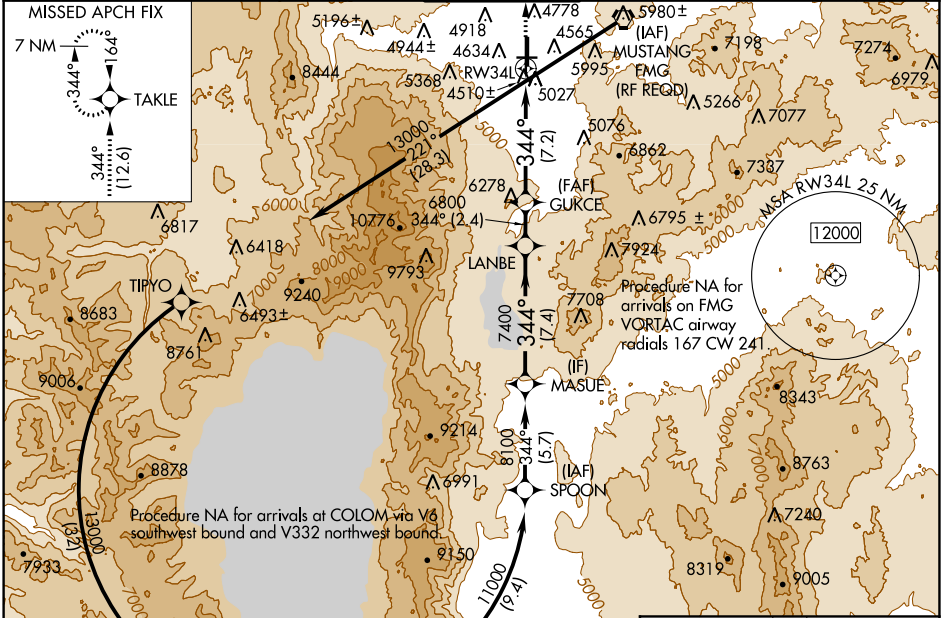
RENO/TAHOE INTL (RNO)

APP CRS <b>344°</b>	Rwy Idg TDZE Apt Elev	<b>10002</b> <b>4410</b> <b>4415</b>
------------------------	-----------------------------	--

**GPS required.** For uncompensated Baro-VNAV systems, procedure NA below -13°C (8°F) or above 40°C (104°F). For operative MALSR increase visibility RNP 0.12 to 1¼ mile and RNP 0.30 to 4 miles.  
\*Missed approach requires minimum climb of 243 feet per NM to 7200.

**MALSR**  
**MISSED APPROACH:** Climb to 10000 via 344° track to TAKLE and hold, continue climb-in-hold to 10000.

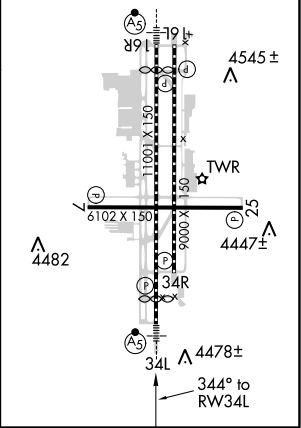
D-ATIS	NORCAL APP CON	RENO TOWER	GND CON	CLNC DEL	CPDLC
<b>135.8 363.0</b>	<b>119.2 279.55 126.3 353.9</b>	<b>118.7 257.8</b>	<b>121.9 348.6</b>	<b>124.9 370.85</b>	



ELEV 10000	TAKLE	VGSI and RNAV glidepath not coincident (VGSI Angle 3.54/TCH 72).	MASUE
344° tr			
	RW34L		8100
			Procedure Turn NA
			GP 3000°
			TCH 45

CATEGORY	A	B	C	D
RNP 0.12 DA*	4771-1 361 (400-1)			
RNP 0.30 DA	5342-2¾ 932 (1000-2¾)			

ELEV 4415 **D** TDZE 4410  
 HIRL Rwy 16R-34L and 16L-34R  
 REIL Rwy 7, 16L, 25, and 34R  
 MIRL Rwy 7-25  $\Delta$ 4474±



**AUTHORIZATION REQUIRED**