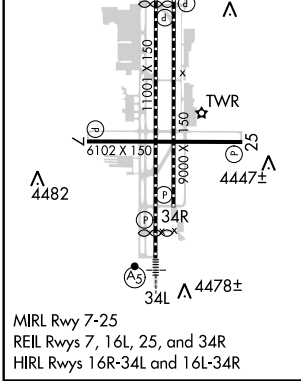
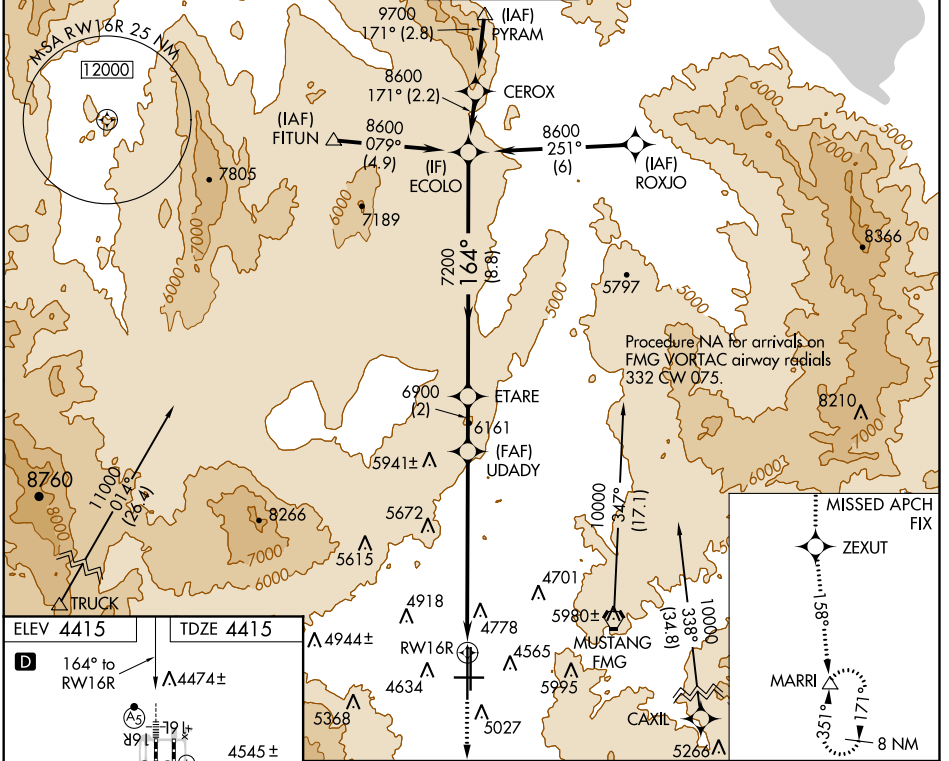


WAAS CH <b>78309</b> <b>W16B</b>	APP CRS <b>164°</b>	Rwy Idg TDZE <b>4415</b> Apt Elev <b>4415</b>
--	------------------------	---

# RNAV (GPS) X RWY 16R

RENO/TAHOE INTL (RNO)

RNP APCH.		RENO TOWER <b>118.7 257.8</b>		GND CON <b>121.9 348.6</b>	CLNC DEL <b>124.9 370.85</b>	CPDLC
<p><b>▽</b> Inoperative table does not apply to LNAV all Cats.  <b>⚠</b> For inoperative MALSR increase LPV all Cats visibility to 2 ¼.  <b>⚡</b> -15°C</p>		MALSR		MISSED APPROACH: Climb to 13000 direct ZEXUT and on track 158° to MARRI and hold.		



VGSi and descent angles not coincident (VGSi Angle 3.06/TCH 77).		13000	ZEXUT	tr 158°	MARRI
<p>ECOLO</p> <p>8600</p> <p>7200</p> <p>6900</p> <p>GP 3.10° TCH 63</p>		ETARE	UDADY	RWY 16R	
CATEGORY	A	B	C	D	
LPV DA	5239-2 ¼ 824 (900-2 ¼)				
LNAV MDA	6200/60 1785 (1800-1 ¼)	6200-1 ½ 1785 (1800-1 ½)	6200-3 1785 (1800-3)		

SW-4, 10 OCT 2019 to 07 NOV 2019

SW-4, 10 OCT 2019 to 07 NOV 2019