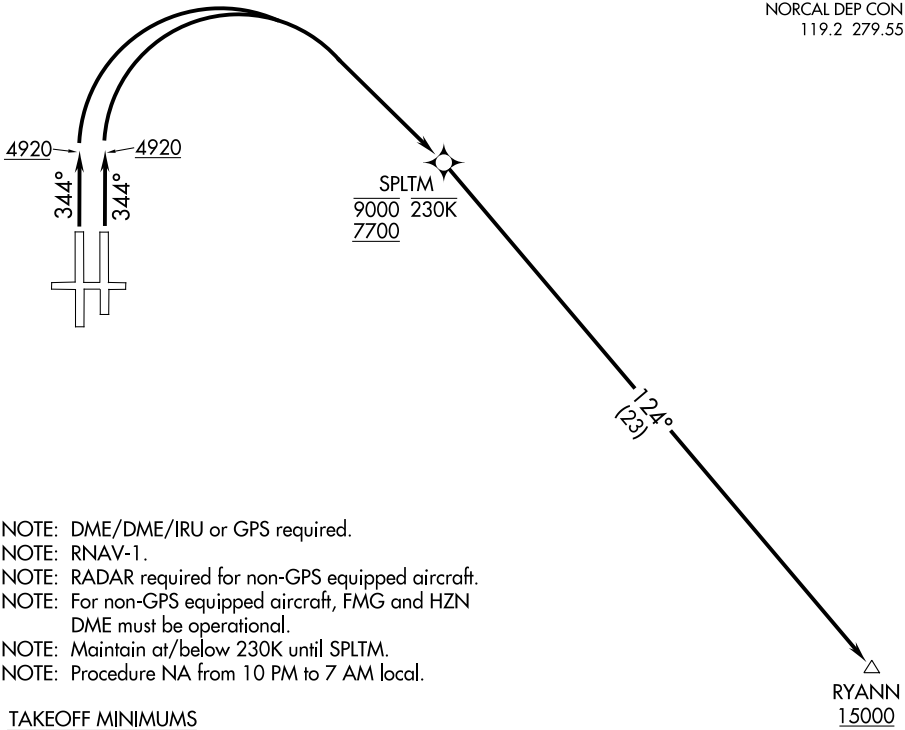


**TOP ALTITUDE:
FL190**

D-ATIS
135.8 363.0
CLNC DEL
124.9 370.85
CPDLC
GND CON
121.9 348.6
RENO TOWER
118.7 257.8
NORCAL DEP CON
119.2 279.55



- NOTE: DME/DME/IRU or GPS required.
- NOTE: RNAV-1.
- NOTE: RADAR required for non-GPS equipped aircraft.
- NOTE: For non-GPS equipped aircraft, FMG and HZN DME must be operational.
- NOTE: Maintain at/below 230K until SPLTM.
- NOTE: Procedure NA from 10 PM to 7 AM local.

TAKEOFF MINIMUMS

- Rwys 7, 25, 16L/R: NA - ATC.
- Rwy 34L: Standard with minimum climb of 594' per NM to 6700, then minimum climb of 306' per NM to 15000.
- Rwy 34R: 400-1½ with minimum climb of 613' per NM to 6700, then minimum climb of 306' per NM to 15000.

NOTE: Chart not to scale.



DEPARTURE ROUTE DESCRIPTION

TAKEOFF RUNWAYS 34L/R: Climb heading 344° to 4920, then climbing right turn direct SPLTM to cross at or above 7700/at or below 9000, then on track 124° to cross RYANN at or above 15000, thence. . . .

. . . .maintain FL190 or assigned altitude. Expect filed altitude 5 minutes after departure.

SW-4, 10 OCT 2019 to 07 NOV 2019

SW-4, 10 OCT 2019 to 07 NOV 2019