

VORTAC FMG 117.9 Chan 126	APP CRS 239°	Rwy Idg TDZE Apt Elev N/A N/A 4415
---	------------------------	--

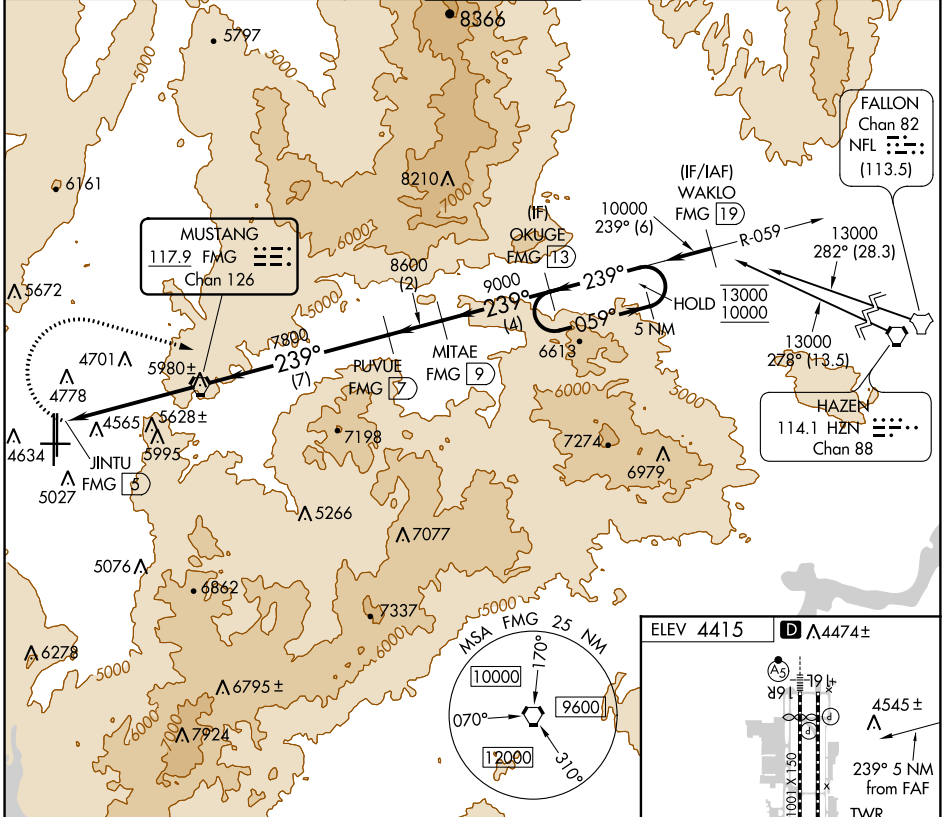
TACAN-F

RENO/TAHOE INTL (RNO)

⚠ Circling NA for Cat E south of Rwy 7 and west of 34L.
⚠ Circling Rwy 7 NA at night. Approaches RADAR monitored by NORCAL APP CON. Arrivals from east and aircraft on missed approach may be vectored to final.
⚠ Circling NA for Cat E to Rwy 7 and 25.

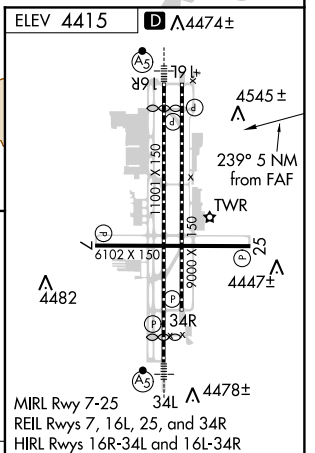
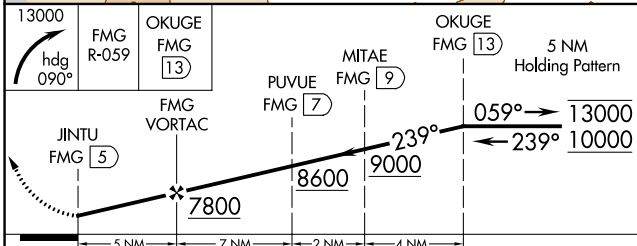
⚠ MISSED APPROACH: Climbing right turn to 13000 on heading 090° and FMG R-059 to OKUGE/13 DME and hold, continue climb-in-hold to 13000.

D-ATIS 135.8 363.0	NORCAL APP CON 119.2 279.55 126.3 353.9	RENO TOWER 118.7 257.8	GND CON 121.9 348.6	CLNC DEL 124.9 370.85	CPDLC
------------------------------	---	----------------------------------	-------------------------------	---------------------------------	-------



SW-4, 10 OCT 2019 to 07 NOV 2019

SW-4, 10 OCT 2019 to 07 NOV 2019



CATEGORY	A	B	C	D	E	FAF to MAP 5 NM					
Ⓞ CIRCLING	5960-1¼ 1545 (1600-1¼)	5960-1½ 1545 (1600-1½)	6360-3	1945 (2000-3)	6440-3 2025 (2100-3)	Knots	60	90	120	150	180
						Min:Sec	5:00	3:20	2:30	2:00	1:40