

# WAGGE SIX DEPARTURE

AL-346 (FAA)

RENO/TAHOE INTL (RNO)  
RENO, NEVADA

D-ATIS  
135.8 363.0  
CLNC DEL  
124.9 370.85  
CPDLC  
GND CON  
121.9 348.6  
RENO TOWER  
118.7 257.8  
NORCAL DEP CON  
119.2 279.55

**TOP ALTITUDE:  
FL190**

LOVELOCK  
116.5 LLC :  
Chan 112  
N40°07.52'-W118°34.66'  
L-9-11, H-3

MUSTANG  
117.9 FMG :  
Chan 126  
N39°31.88'-W119°39.36'  
L-9, H-3

MINIMUM CROSSING  
ALTITUDES AT FMG  
FOR MUSTANG TRANSITION  
V28-113 South: 10500  
V6 Southwest: 12000  
V165 South: 10000

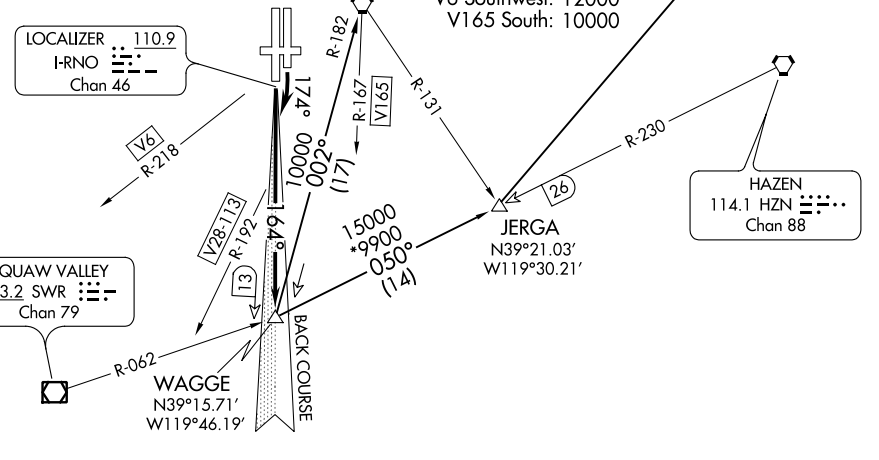
LOCALIZER  
I-RNO :  
Chan 46

SQUAW VALLEY  
113.2 SWR :  
Chan 79

HAZEN  
114.1 HZN :  
Chan 88

WAGGE  
N39°15.71'  
W119°46.19'

JERGA  
N39°21.03'  
W119°30.21'



### TAKEOFF MINIMUMS

Rwys 7, 25, 34L/R: NA- ATC.

Rwy 16R: Standard with minimum climb of 370' per NM to 9200.

Rwy 16L: Standard with minimum climb of 740' per NM to 8000.

NOTE: Chart not to scale.

### DEPARTURE ROUTE DESCRIPTION

**TAKEOFF RUNWAY 16R:** Climb on I-RNO south course to WAGGE INT, thence via (transition) or assigned route.

**TAKEOFF RUNWAY 16L:** Climbing right turn heading 174° to intercept I-RNO south course to WAGGE INT, thence via (transition) or assigned route.

All aircraft maintain FL190 or assigned altitude. Expect clearance to requested altitude 5 minutes after departure.

**LOVELOCK TRANSITION (WAGGE6.LLC):** From over WAGGE INT via HZN R-230 to JERGA INT then via LLC R-206 to LLC VORTAC.

**MUSTANG TRANSITION (WAGGE6.FMG):** From over WAGGE INT via FMG R-182 to FMG VORTAC.

SW-4, 10 OCT 2019 to 07 NOV 2019

SW-4, 10 OCT 2019 to 07 NOV 2019