

# ZEFFR SIX DEPARTURE (RNAV)

AL-346 (FAA)

RENO/TAHOE INTL (R.NO)  
RENO, NEVADA

D-ATIS  
135.8 363.0  
CLNC DEL  
124.9 370.85  
CPDLC  
GND CON  
121.9 348.6  
RENO TOWER  
118.7 257.8  
NORCAL DEP CON  
119.2 279.55

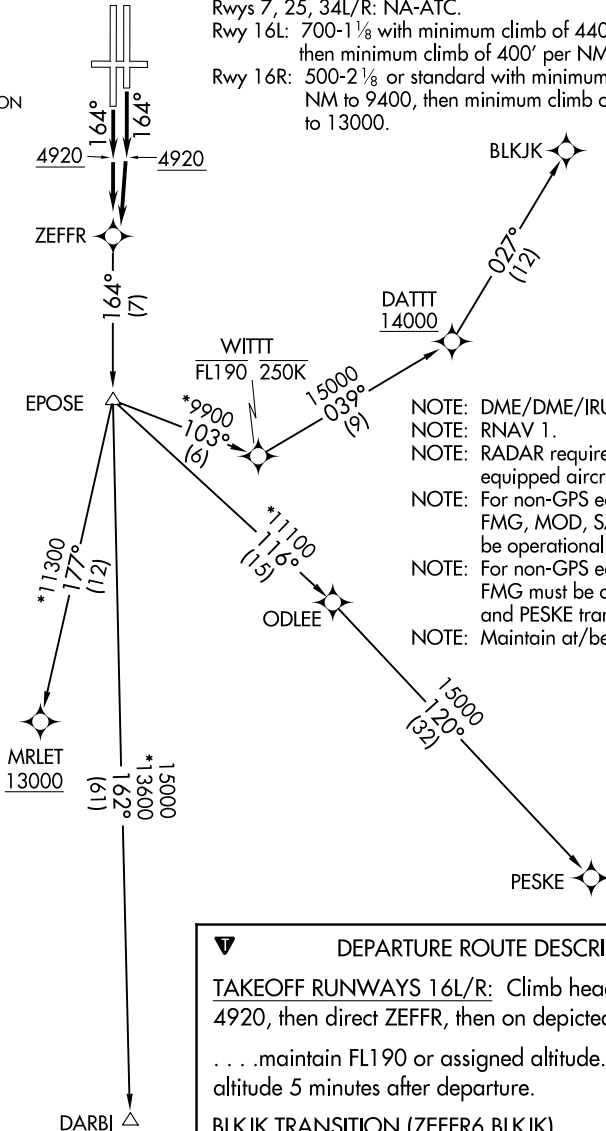
**TOP ALTITUDE:  
FL190**

### TAKEOFF MINIMUMS

Rwys 7, 25, 34L/R: NA-ATC.

Rwy 16L: 700-1 1/8 with minimum climb of 440' per NM to 9400, then minimum climb of 400' per NM to 13000.

Rwy 16R: 500-2 1/8 or standard with minimum climb of 440' per NM to 9400, then minimum climb of 400' per NM to 13000.



- NOTE: DME/DME/IRU or GPS required.
- NOTE: RNAV 1.
- NOTE: RADAR required for non-GPS equipped aircraft.
- NOTE: For non-GPS equipped aircraft, FMG, MOD, SAC, and SWR must be operational for DARBI transition.
- NOTE: For non-GPS equipped aircraft FMG must be operational for BLKJK and PESKE transitions.
- NOTE: Maintain at/below 250K until WITTT.

**DEPARTURE ROUTE DESCRIPTION**

TAKEOFF RUNWAYS 16L/R: Climb heading 164° to 4920, then direct ZEFFR, then on depicted route, thence . . . . maintain FL190 or assigned altitude. Expect filed altitude 5 minutes after departure.

BLKJK TRANSITION (ZEFFR6.BLKJK)

DARBI TRANSITION (ZEFFR6.DARBI)

MRLET TRANSITION (ZEFFR6.MRLET)

PESKE TRANSITION (ZEFFR6.PESKE)

NOTE: Chart not to scale.

SW-4, 10 OCT 2019 to 07 NOV 2019

SW-4, 10 OCT 2019 to 07 NOV 2019