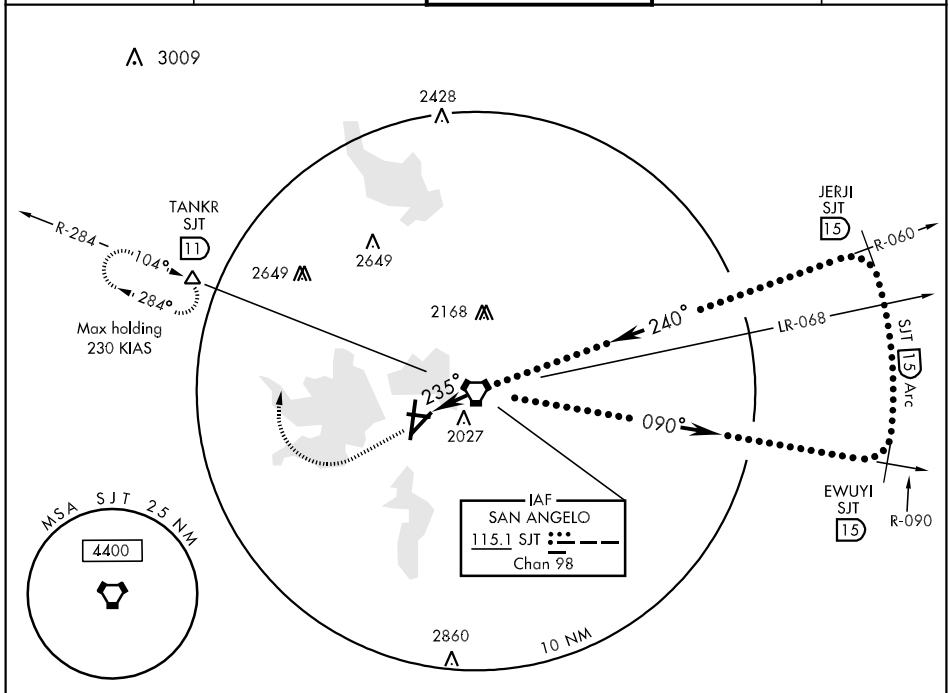
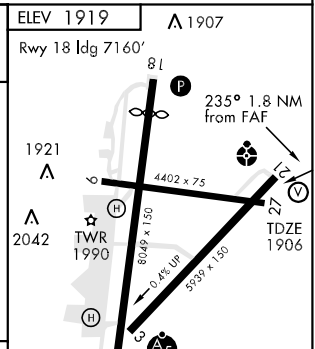
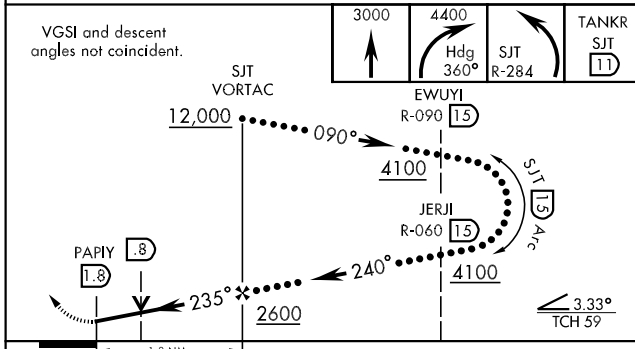


VORTAC SJT 115.1 Chan 98	APCH CRS 235°	Rwy Idg TDZE 1906 Arpt Elev 1919	JAL-367 [USAF]	SAN ANGELO REGIONAL/MATHIS FIELD (KSJT)
* CAT E circling NA W of Rwy 18-36			ODALS	MISSED APPROACH: Climb to 3000, then climbing right turn to 4400 via hdg 360° to intercept SJT VORTAC R-284 to TANKR INT/11 DME and hold.

ATIS 128.45 319.0	SAN ANGELO APP CON 125.35 354.1	MATHIS TOWER ★ 118.3 (CTAF) 284.7	GND CON 121.9 348.6	ASR
-----------------------------	-------------------------------------------	----------------------------------------------------	-------------------------------	-----



EMERG SAFE ALT 100 NM 5100



CATEGORY	C	D	E
S-21	2280- $\frac{3}{4}$ 374 (400- $\frac{3}{4}$)	2280-1 $\frac{1}{4}$ 374 (400-1 $\frac{1}{4}$)	
CIRCLING *	2460-1 $\frac{1}{2}$ 541 (600-1 $\frac{1}{2}$)	2480-2 561 (600-2)	2640-2 $\frac{1}{2}$ 721 (800-2 $\frac{1}{2}$)

SC-3, 10 OCT 2019 to 07 NOV 2019

SC-3, 10 OCT 2019 to 07 NOV 2019