


# HI-VOR/DME or TACAN RWY 3

VORTAC SJT <b>115.1</b> Chan <b>98</b>	APCH CRS <b>045°</b>	Rwy Idg TDZE <b>1917</b> Arpt Elev <b>1919</b>
--	-------------------------	--

JAL-367 [USAF]

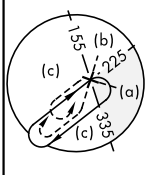
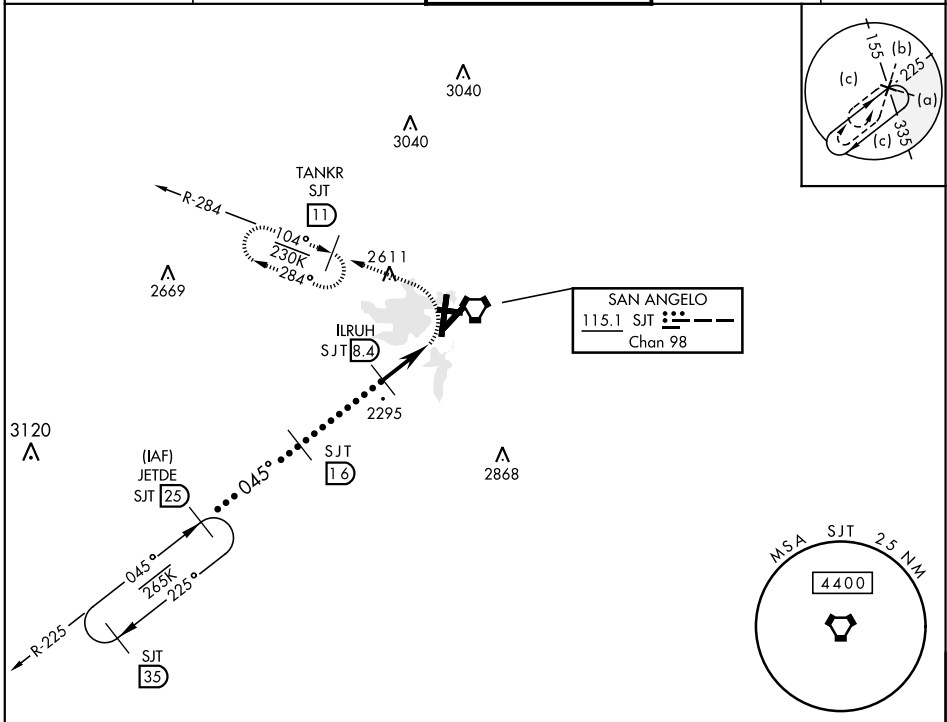
SAN ANGELO REGIONAL/MATHIS FIELD (KSJT)

\* CAT E Circling not authorized W of Rwy 18-36.

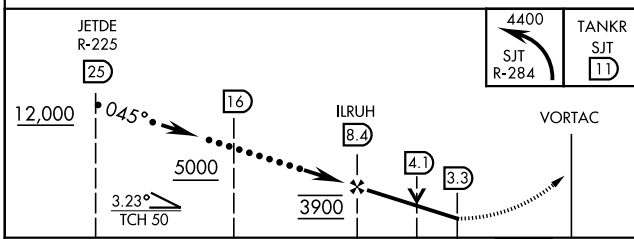
MALSR 

MISSED APPROACH: Climbing left turn to 4400 via SJT VORTAC R-284 to TANKR INT/11 DME and hold.

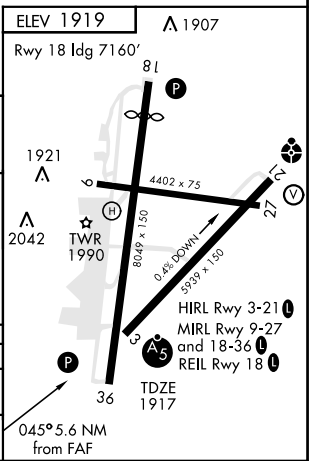
ATIS <b>128.45 319.0</b>	SAN ANGELO APP CON <b>125.35 354.1</b>	MATHIS TOWER ★ <b>118.3 0</b> (CTAF) <b>284.7</b>	GND CON <b>121.9 348.6</b>	ASR
-----------------------------	---	--	-------------------------------	-----



**RADAR REQUIRED**  
EMERG SAFE ALT 100 NM 5100



CATEGORY	C	D	E
S-3	2420-1 503	(600-1)	2420-1½ 503 (600-1½)
CIRCLING *	2460-1½ 541 (600-1½)	2480-2 561 (600-2)	2640-2½ 721 (800-2½)



# HI-VOR/DME or TACAN RWY 3

SC-3, 10 OCT 2019 to 07 NOV 2019

SC-3, 10 OCT 2019 to 07 NOV 2019