

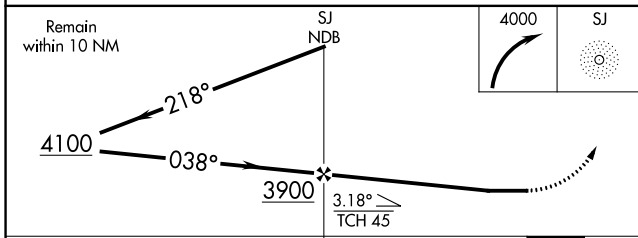
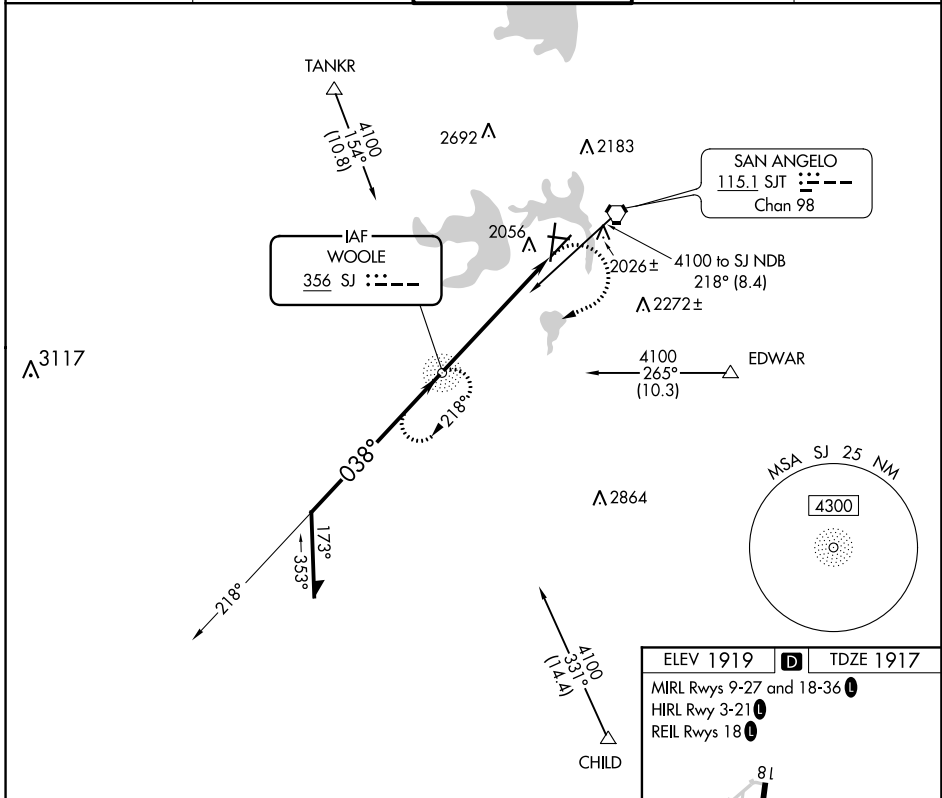
NDB SJ 356	APP CRS 038°	Rwy Idg TDZE Apt Elev	5939 1917 1919
----------------------	------------------------	-----------------------------	---

NDB RWY 3

SAN ANGELO RGNL/MATHIS FIELD (SJT)

<p>For inop ALS, increase Cat A/B visibility to RVR 5500, and Cat C/D to 2 SM.</p>	<p>MALS R</p>	<p>MISSED APPROACH: Climbing right turn to 4000 direct SJ NDB and hold.</p>	

ATIS 128.45 319.0	SAN ANGELO APP CON ★ 125.35 354.1	MATHIS TOWER ★ 118.3 (CTAF) 284.7	GND CON 121.9 348.6	UNICOM 122.95
-----------------------------	---	---	-------------------------------	-------------------------



ELEV 1919	D	TDZE 1917
MIRL Rwy 9-27 and 18-36		
HIRL Rwy 3-21		
REIL Rwy 18		

038° 5.7 NM from FAF	FACILITY TO MAP 5.7 NM				
Knots	60	90	120	150	180
Min:Sec	5:42	3:48	2:51	2:17	1:54

CATEGORY	A	B	C	D
S-3	2640/40	723 (800-¾)	2640-1½	723 (800-1½)
C CIRCLING	2640-1	721 (800-1)	2640-2	2700-2½ 781 (800-2½)

SC-3, 10 OCT 2019 to 07 NOV 2019

SC-3, 10 OCT 2019 to 07 NOV 2019