

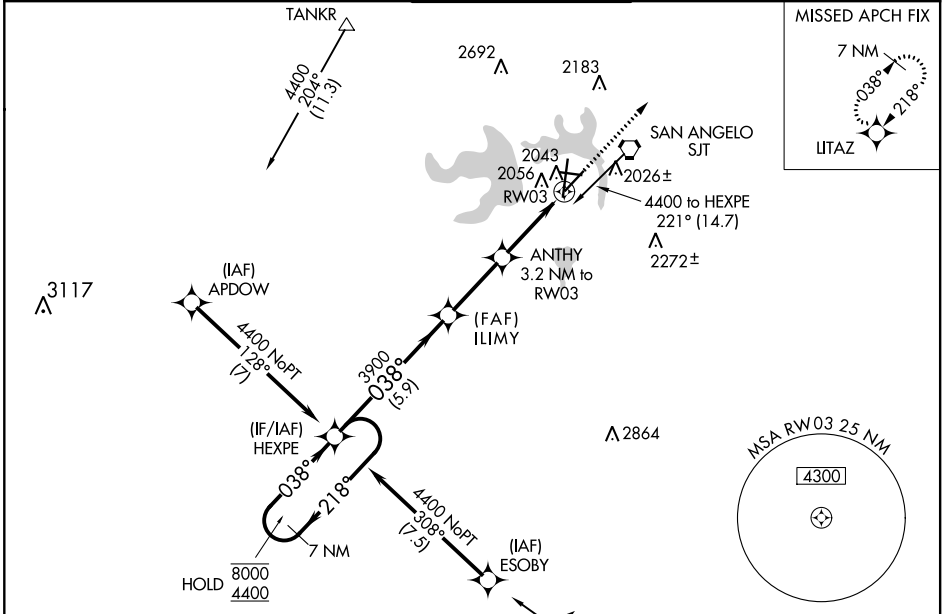
WAAS CH 77517 W03A	APP CRS 038°	Rwy Idg TDZE Apt Elev	5939 1917 1919
--	------------------------	-----------------------------	---

RNAV (GPS) RWY 3

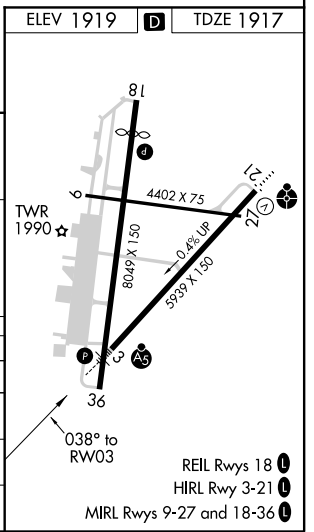
SAN ANGELO RGNL/MATHIS FIELD (SJT)

RNP APCH	MALS R	MISSED APPROACH:
<p>For uncompensated Baro-VNAV systems, LNAV/VNAV NA below -8°C or above 54°C.</p> <p>For inop ALS, increase LPV Cat E visibility to RVR 4000, and LNAV/VNAV Cat E and LNAV Cat E visibility to RVR 6000. Circling NA for Cat E west of Rwy 18-36.</p> <p># RVR 1800 authorized with use of FD or AP or HUD to DA.</p>		<p>Climb to 3800 direct LITAZ and hold.</p>

ATIS 128.45 319.0	SAN ANGELO APP CON * 125.35 354.1	MATHIS TOWER * 118.3 (CTAF) 284.7	GND CON 121.9 348.6	UNICOM 122.95
-----------------------------	---	---	-------------------------------	-------------------------



ELEV 1919	TDZE 1917
7 NM Holding Pattern	HEXPE
8000 → -218°	4400 → 038°
GP 3.00°	TCH 51
ILIMY 3900	ANTHY 3.2 NM to RW03
*3000	*1 NM to RW03
5.9 NM	2.8 NM
2.2 NM	1 NM
3800	LITAZ
*LNAV only.	
CATEGORY	A B C D E
LPV DA #	2117/24 200 (200-½)
LNAV/VNAV DA	2296/35 379 (400-¾)
LNAV MDA	2300/24 383 (400-½) 2300/35 383 (400-¾)
CIRCLING	2360-1 2380-1 2500-1½ 2700-2½ 2700-2¾
	441 (500-1) 461 (500-1) 581 (600-1½) 781 (800-2½) 781 (800-2¾)



SC-3, 10 OCT 2019 to 07 NOV 2019

SC-3, 10 OCT 2019 to 07 NOV 2019