

ALISS FIVE DEPARTURE (RNAV)

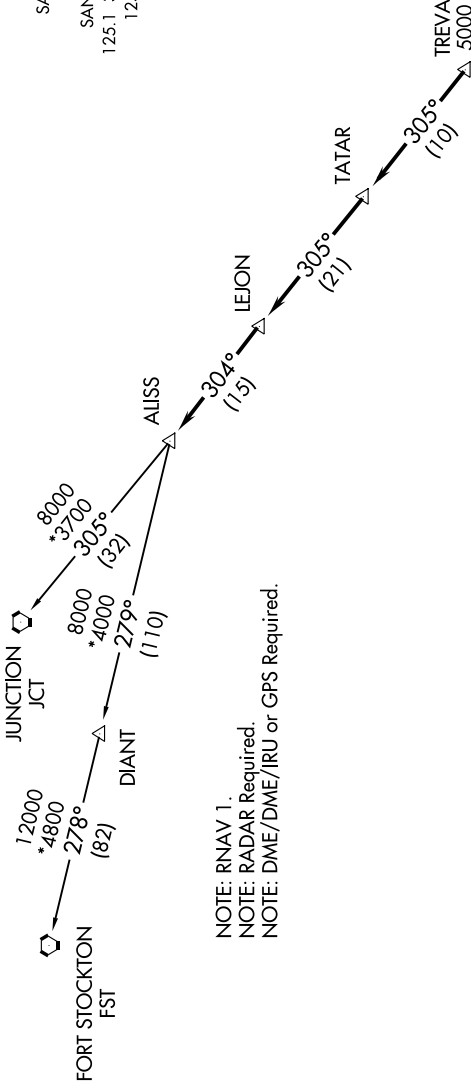
SC-3, 10 OCT 2019 to 07 NOV 2019

TAKEOFF MINIMUMS

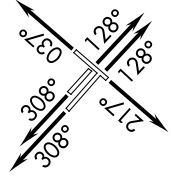
Rwys 4, 13L/R, 22, 31L/R: Standard.

**TOP ALTITUDE:
5000**

- D-ATIS 118.9
- CLNC DEL 126.7
- CPDLC
- GND CON 121.9 348.6
- SAN ANTONIO TOWER 119.8 257.8
- SAN ANTONIO DEP CON 125.1 307.0 (Rwys 4/22/31)
- 125.7 290.225 (Rwy 13)



NOTE: RNAV 1.
NOTE: RADAR Required.
NOTE: DME/DME/IRU or GPS Required.



NOTE: Chart not to scale.

(NARRATIVE ON FOLLOWING PAGE)

SC-3, 10 OCT 2019 to 07 NOV 2019

ALISS FIVE DEPARTURE (RNAV)