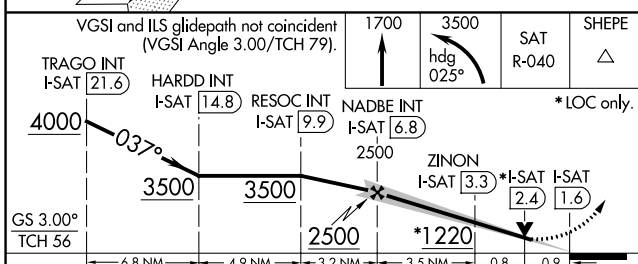
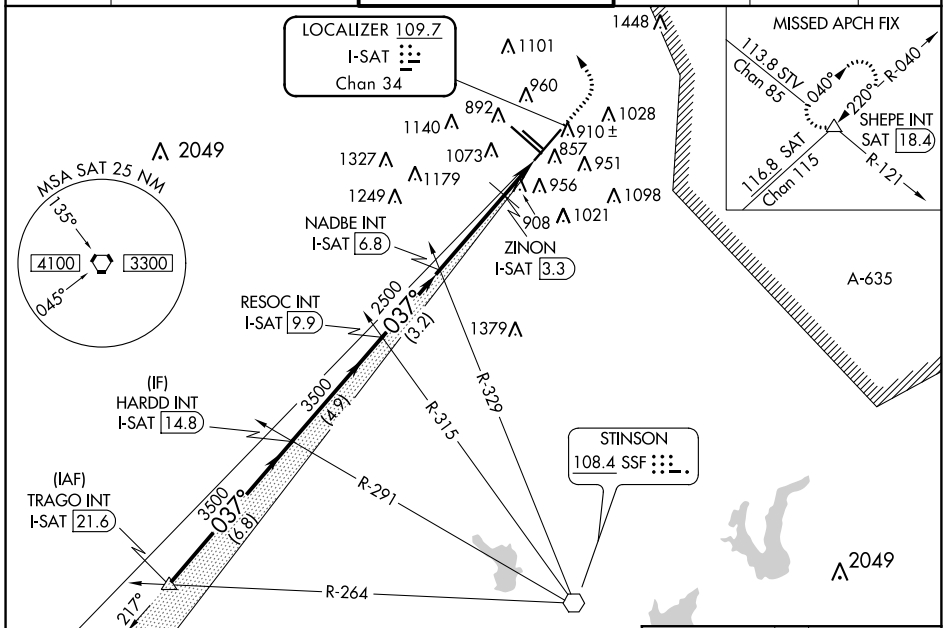


LOC/DME I-SAT 109.7 Chan 34	APP CRS 037°	Rwy ldg 8505 TDZE 786 Apt Elev 809
---	------------------------	---

ILS or LOC RWY 4

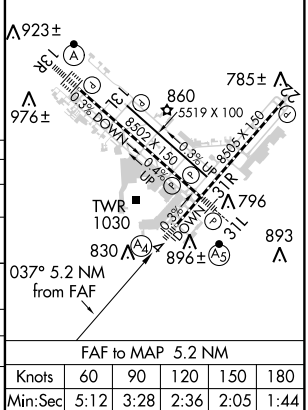
SAN ANTONIO INTL (SAT)

<p>⚠ Inop table does not apply to S-ILS 4. Circling NA west of Rwy 4 and 13R. Autopilot coupled approach NA below 1189. For inop ALS, increase S-LOC 4 Cat D visibility to 1¼ SM. ZINON fix minimums: for inop ALS, increase S-LOC 4 Cat D visibility to RVR 5000.</p>		<p>MALS Ⓜ =</p>	<p>MISSED APPROACH: Climb to 1700 then climbing left turn to 3500 on heading 025° and SAT VORTAC R-040 to SHEPE INT/SAT 18.4 DME and hold.</p>		
D-ATIS 118.9	SAN ANTONIO APP CON 125.1 307.0	SAN ANTONIO TOWER 119.8 257.8	GND CON 121.9 348.6	CLNC DEL 126.7	CPDLC



ELEV 809	D TDZE 786
<p>TDZ/CL Rwy 12R REL Rwys 12L, 22 and 30R MIRL Rwy 12L-30R HIRL Rwys 4-22 and 12R-30L</p>	

CATEGORY	A	B	C	D
S-ILS 4	986/40		200 (200-¾)	
S-LOC 4	1220/40	434 (500-¾)	1220/50	434 (500-1)
CIRCLING	1300-1	491 (500-1)	1320-1½ 511 (600-1½)	1380-2 571 (600-2)
ZINON FIX MINIMUMS (DME REQUIRED)				
S-LOC 4	1120/40		334 (400-¾)	
CIRCLING	1300-1	491 (500-1)	1320-1½ 511 (600-1½)	1380-2 571 (600-2)



SC-3, 10 OCT 2019 to 07 NOV 2019

SC-3, 10 OCT 2019 to 07 NOV 2019

FAF to MAP 5.2 NM					
Knots	60	90	120	150	180
Min:Sec	5:12	3:28	2:36	2:05	1:44