

# MARCS ONE ARRIVAL

SAN ANTONIO, TEXAS

SAN ANTONIO APP CON  
 127.1 269.1  
 124.45 335.625  
 KELLY FLD ATIS  
 120.45 273.5  
 RANDOLPH AFB ATIS\*  
 290.525  
 SAN ANTONIO INTL D-ATIS  
 118.9  
 STINSON MUNI ATIS\*  
 128.8

WACO  
 115.3 ACT  
 Chan 100  
 N 31°39.74' - W 97°16.14'  
 L-19, H-6

MAVERICK  
 113.1 TTT  
 Chan 78

WINDU  
 N31°31.83'  
 W97°04.95'  
 L-19, H-6

GOOCH SPRINGS  
 112.5 AGJ  
 Chan 72

BLEWE  
 N31°12.46'  
 W97°12.54'

LUFKIN  
 112.1 LFK  
 Chan 58  
 N31°09.75'-W94°43.01'  
 L-19-21, H-6

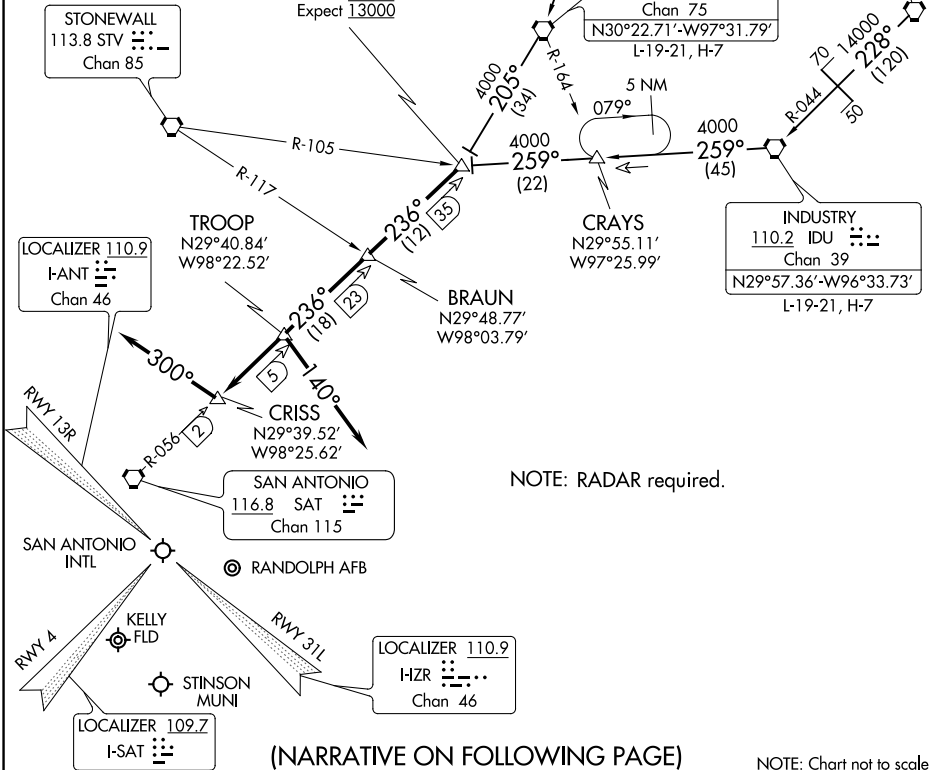
MARCS  
 N29°53.87'  
 W97°51.68'  
 L-15, H-7  
 TURBOJET VERTICAL  
 NAVIGATION PLANNING  
 INFORMATION  
 Expect 13000

CENTEX  
 112.8 CWK  
 Chan 75  
 N30°22.71'-W97°31.79'  
 L-19-21, H-7

STONEWALL  
 113.8 STV  
 Chan 85

SC-3, 10 OCT 2019 to 07 NOV 2019

SC-3, 10 OCT 2019 to 07 NOV 2019



# MARCS ONE ARRIVAL

(MARCS.MARCS1) 02MAR17

SAN ANTONIO, TEXAS