

# RNAV (RNP) Z RWY 13R

SAN ANTONIO INTL (SAT)

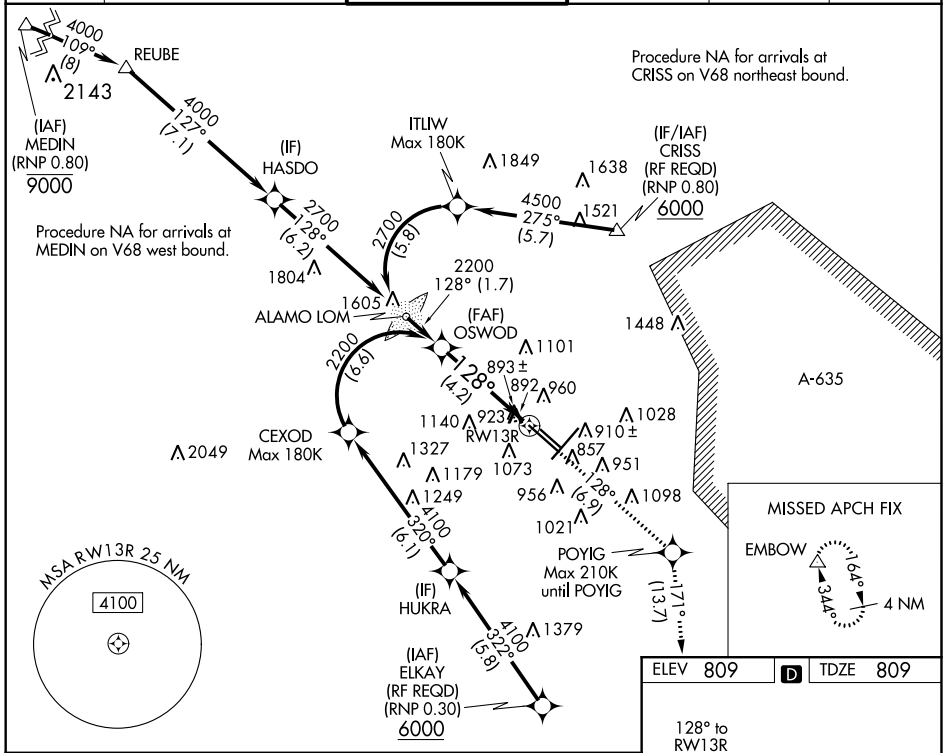
APP CRS	Rwy Idg	<b>8502</b>
<b>128°</b>	TDZE	<b>809</b>
	Apt Elev	<b>809</b>

For uncompensated Baro-VNAV systems, procedure NA below -4°C (25°F) or above 54°C (130°F). GPS required.

ALSF-2

MISSED APPROACH: Climb to 3100 on track 128° to POYIG and track 171° to EMBOW and hold.

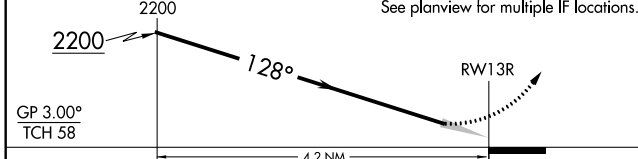
D-ATIS	SAN ANTONIO APP CON	SAN ANTONIO TOWER	GND CON	CLNC DEL	CPDLC
<b>118.9</b>	<b>125.1 307.0</b>	<b>119.8 257.8</b>	<b>121.9 348.6</b>	<b>126.7</b>	



VGSI and RNAV glidepath not coincident (VGSI Angle 3.00/TCH 75).

3100	POYIG	tr 128°	EMBOW
↑	⬠	↑	△

See planview for multiple IF locations.



CATEGORY	A	B	C	D
RNP 0.15 DA		1150/30	341 (400-5%)	
RNP 0.30 DA		1303/60	494 (500-1¼)	

**AUTHORIZATION REQUIRED**

ELEV 809	TDZE 809
----------	----------

128° to RW13R

923±

976±

860

785±

5519 X 100

5302 X 50

805 X 130

896±

796

893

TWR 1030

830

311

311

TDZ/CL Rwy 13R

REIL Rwys 12L, 22 and 30R

MIRL Rwy 12L-30R

HIRL Rwys 4-22 and 13R-30L

SC-3, 10 OCT 2019 to 07 NOV 2019

SC-3, 10 OCT 2019 to 07 NOV 2019