

APP CRS	Rwy Idg	<b>8505</b>
<b>217°</b>	TDZE	<b>770</b>
	Apt Elev	<b>809</b>

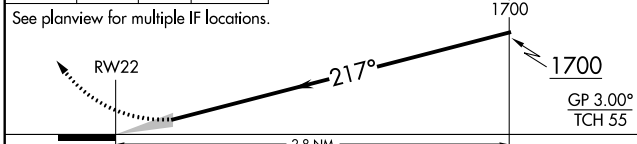
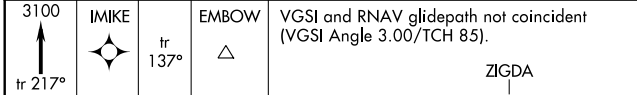
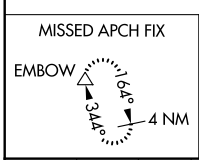
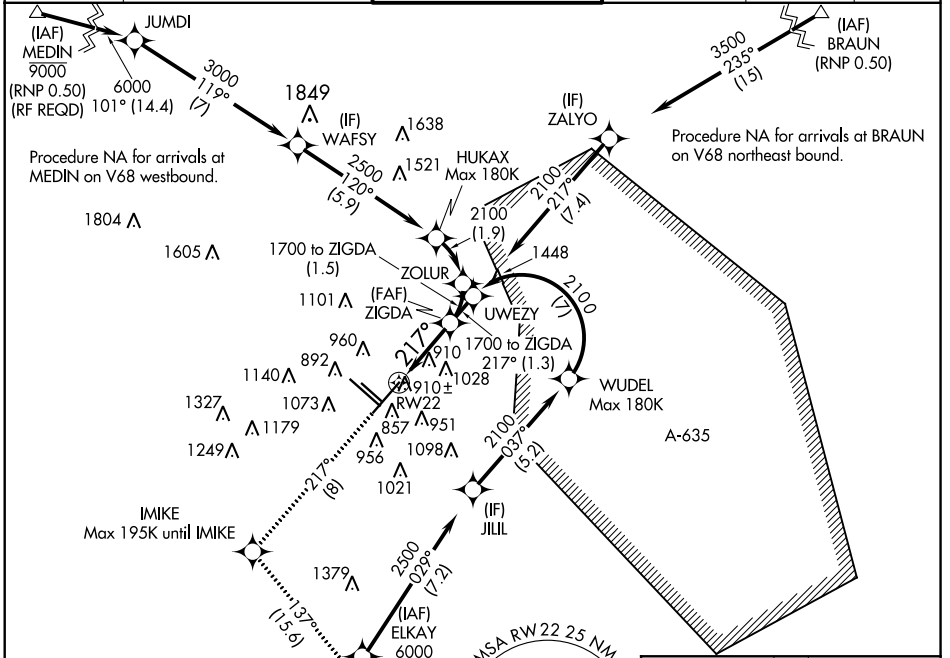
# RNAV (RNP) Z RWY 22

SAN ANTONIO INTL (SAT)

For uncompensated Baro-VNAV systems, procedure NA below -2°C (29°F) or above 54°C (130°F). GPS required.

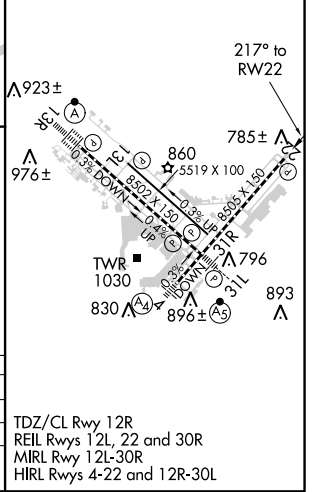
MISSED APPROACH: Climb to 3100 on track 217° to IMKE and track 137° to EMBOW and hold.

D-ATIS	SAN ANTONIO APP CON	SAN ANTONIO TOWER	GND CON	CLNC DEL	CPDLC
<b>118.9</b>	<b>125.1 307.0</b>	<b>119.8 257.8</b>	<b>121.9 348.6</b>	<b>126.7</b>	



CATEGORY	A	B	C	D
RNP 0.15 DA		1120-1/8	350 (400-1/8)	
RNP 0.30 DA		1320-1/8	550 (600-1/8)	

ELEV	809	TDZE	770
------	-----	------	-----



SC-3, 10 OCT 2019 to 07 NOV 2019

SC-3, 10 OCT 2019 to 07 NOV 2019

**AUTHORIZATION REQUIRED**

TDZ/CL Rwy 12R  
REIL Rwys 12L, 22 and 30R  
MIRL Rwy 12L-30R  
HIRL Rwys 4-22 and 12R-30L