

APP CRS	Rwy Idg	8502
308°	TDZE	790
	Apt Elev	809

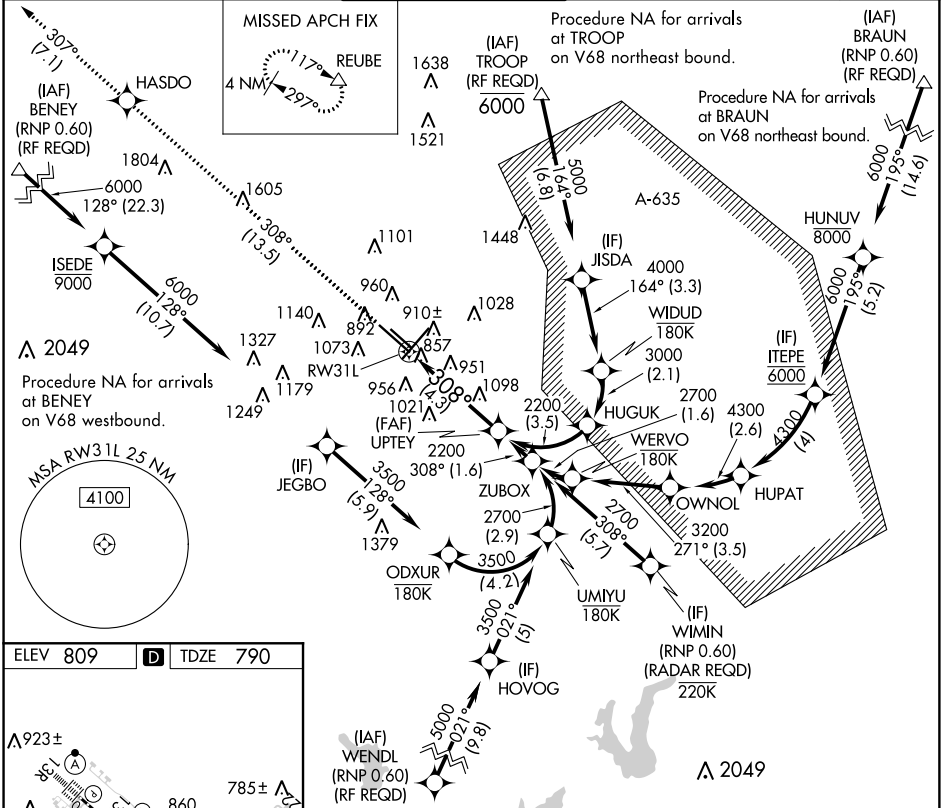
RNAV (RNP) Z RWY 31L

SAN ANTONIO INTL (SAT)

▽ For uncompensated Baro-VNAV systems, procedure NA below -4°C (25°F) or above 54°C (130°F). GPS required.

MALSR MISSED APPROACH: Climb to 3000 on track 308° to HASDO then climb to 4200 on track 307° to REUBE and hold.

D-ATIS	SAN ANTONIO APP CON	SAN ANTONIO TOWER	GND CON	CLNC DEL	CPDLC
118.9	125.1 307.0	119.8 257.8	121.9 348.6	126.7	



SC-3, 10 OCT 2019 to 07 NOV 2019

SC-3, 10 OCT 2019 to 07 NOV 2019

ELEV	809	D	TDZE	790
------	------------	----------	------	------------

TDZ/CL Rwy 12R
REIL Rwys 12L, 21 and 30R
MIRL Rwy 12L-30R
HIRL Rwys 3-21 and 12R-30L

3000	HASDO	4200	REUBE	VGSI and RNAV glidepath not coincident (VGSI Angle 3.00°/TCH 82).
tr 308°		tr 307°		

CATEGORY	A	B	C	D
RNP 0.30 DA	1232/50		442 (500-1)	

AUTHORIZATION REQUIRED