

APP CRS	Rwy Idg	8505
037°	TDZE	786
	Apt Elev	809

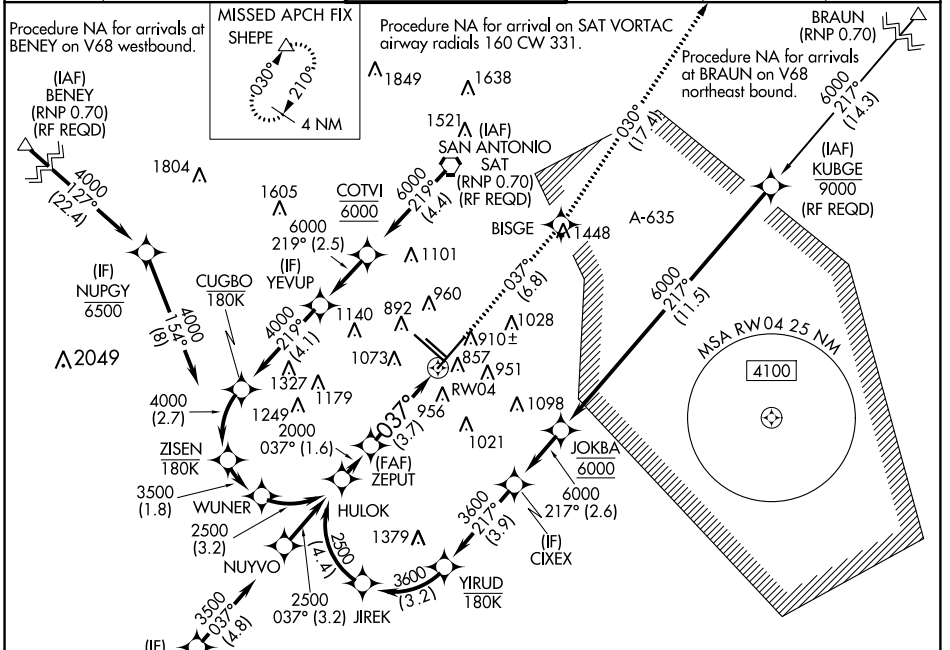
RNAV (RNP) Z RWY 4

SAN ANTONIO INTL (SAT)

▼ For uncompensated Baro-VNAV systems, procedure NA below -4°C (25°F) or above 54°C (130°F). GPS required. For inop ALS, increase RNP 0.15 Cat D visibility to 1¼ SM and RNP 0.30 Cat D visibility to 1¼ SM.

MALS MISSED APPROACH: Climb to 3500 on track 037° to BISGE and track 030° to SHEPE and hold.

D-ATIS	SAN ANTONIO APP CON	SAN ANTONIO TOWER	GND CON	CLNC DEL	CPDLC
118.9	125.1 307.0	119.8 257.8	121.9 348.6	126.7	



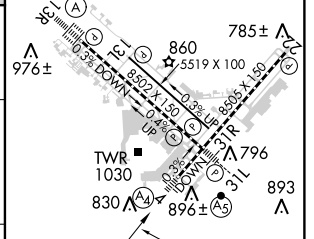
SC-3, 10 OCT 2019 to 07 NOV 2019

SC-3, 10 OCT 2019 to 07 NOV 2019



ELEV 809	TDZE 786
----------	----------

CATEGORY	A	B	C	D
RNP 0.15 DA		1171/50	385 (400-1)	
RNP 0.30 DA		1284-1½	498 (500-1½)	



AUTHORIZATION REQUIRED

TDZ/CL Rwy 12R
REIL Rws 12L, 22 and 30R
MIRL Rwy 12L-30R
HIRL Rws 4-22 and 12R-30L