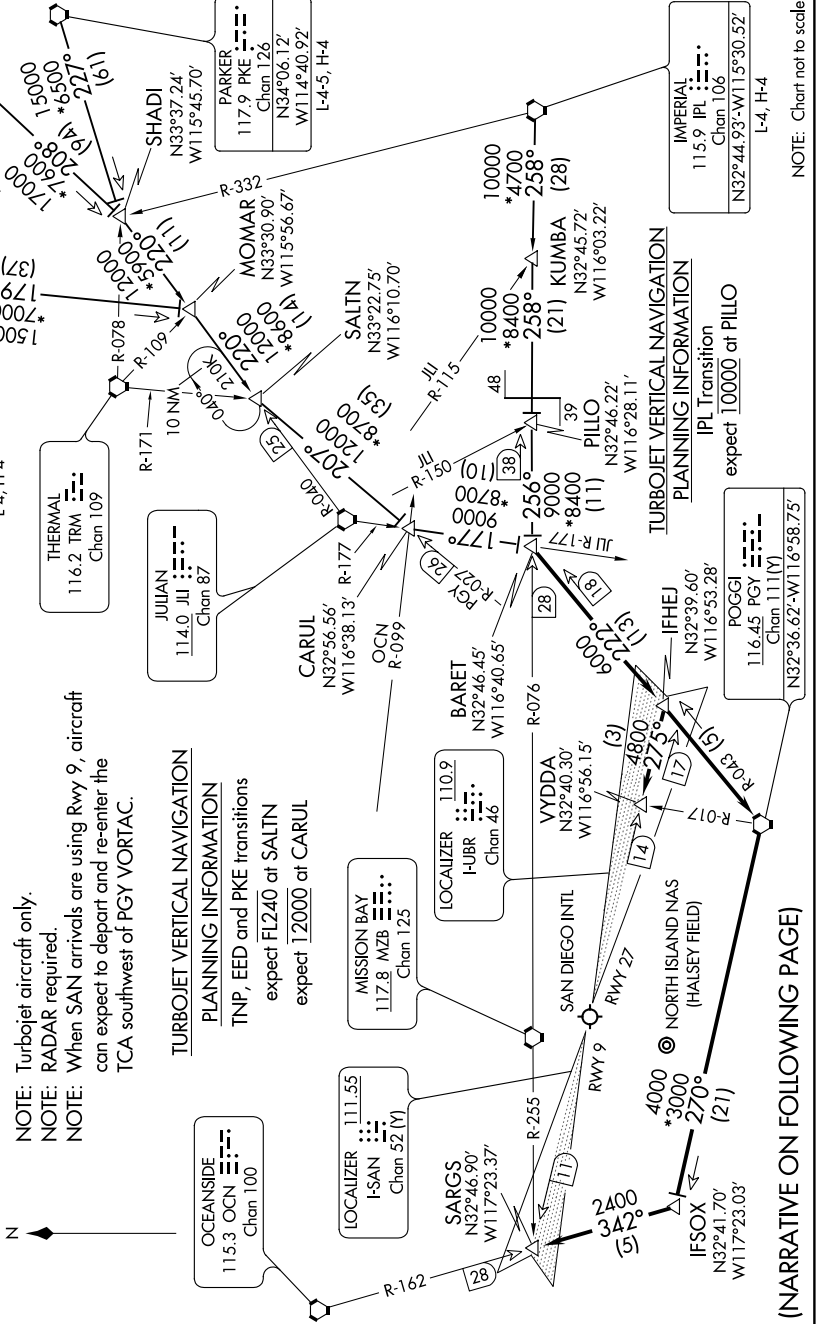


SW-3, 10 OCT 2019 to 07 NOV 2019

SOCAL APP CON
124.35 Z79.625
LINDBERG D-ATIS
134.8
NORTH ISLAND ATIS*
317.8



NOTE: Turbojet aircraft only.
 NOTE: RADAR required.
 NOTE: When SAN arrivals are using Rwy 9, aircraft can expect to depart and re-enter the TCA southwest of PGY VORTAC.

TURBOJET VERTICAL NAVIGATION PLANNING INFORMATION
 TNP, EED and PKE transitions
 expect FL240 at SALTIN
 expect 12000 at CARUL

TURBOJET VERTICAL NAVIGATION PLANNING INFORMATION
 IPL Transition
 expect 10000 at PILLO

(NARRATIVE ON FOLLOWING PAGE)

NOTE: Chart not to scale.

SW-3, 10 OCT 2019 to 07 NOV 2019