

# BORDER SEVEN DEPARTURE

AL-373 (FAA)

SAN DIEGO INTL (SAN)  
SAN DIEGO, CALIFORNIA

610Z MON 10 OCT 2019 to 07 NOV 2019 13:MS

## DEPARTURE ROUTE DESCRIPTION

**TAKEOFF RUNWAY 9:** Climb on heading 093° to intercept MZB VORTAC R-096 to BROWS INT. Thence. . . .

**TAKEOFF RUNWAY 27:** Climb on heading 278° until PGY 19 DME, then left turn on heading 123° to intercept PGY VORTAC R-260 and R-069 to BROWS INT. Thence. . . .

. . . . (transition) or (assigned route). Maintain assigned altitude. Expect filed altitude/flight level 10 minutes after departure.

**IMPERIAL TRANSITION (BRDR7.IPL):** From over BROWS INT on PGY R-069 and IPL R-250 to IPL VORTAC.

**JULIAN TRANSITION (BRDR7.JJI):** From over BROWS INT on JJI R-182 to JJI VORTAC.

## TOP ALTITUDE: ASSIGNED BY ATC

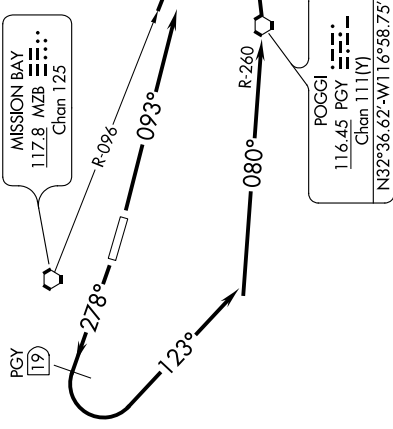
**JULIAN**  
114.0 JJI :--  
Chan 87  
N33°08.43'-W116°35.16'  
L-4, H-4

D-ATIS 134.8  
CLNC DEL 125.9  
CPDLC  
GND CON 123.9  
LINDBERGH TOWER 118.3 338.225  
SOCAL DEP CON  
EAST 124.35 279.625  
WEST 119.6 363.1

## TAKEOFF MINIMUMS

**Rwy 9:** 400-1 with minimum climb of 610' per NM to 1900 or standard with minimum climb of 686' per NM to 1900.

**Rwy 27:** 400-2½ or standard with minimum climb of 353' per NM to 400.



**IMPERIAL**  
115.9 IPL :--  
Chan 106  
N32°44.93'-W115°30.51'  
L-4, H-4

**POGGI**  
116.45 PGY :--  
Chan 111(Y)  
N32°36.62'-W116°58.75'

NOTE: Rwy 9- RADAR required.  
NOTE: Rwy 27- DME required.

NOTE: Chart not to scale.

# BORDER SEVEN DEPARTURE