

# BUFLT FOUR DEPARTURE

AL-379 (FAA)

SANTA MARIA, CALIFORNIA

ATIS 121.15  
 GND CON 121.9  
 SANTA MARIA TOWER \*  
 118.3 239.25  
 SANTA BARBARA DEP CON \*  
 124.15 327.8  
 LOS ANGELES CENTER  
 119.05 269.5  
 UNICOM  
 122.95

PASO ROBLES  
 114.3 PRB  
 Chan 90

**TOP ALTITUDE:  
 ASSIGNED BY ATC**

### TAKEOFF MINIMUMS

- Rwy 2: Standard with minimum climb of 342' per NM to 1900.
- Rwy 12: Standard with minimum climb of 410' per NM to 1900.
- Rwy 20 NA - Restricted airspace (R-2516).
- Rwy 30: Standard with minimum climb of 317' per NM to 1900.

PISMO  
 N35°15.75'  
 W121°02.74'

FRAMS  
 N35°22.03'  
 W120°56.37'  
 L-3-7

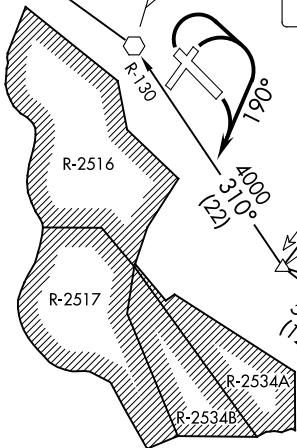
MORRO BAY  
 112.4 MQO  
 Chan 71

GUADALUPE  
 111.0 GLJ  
 N34°57.14'  
 W120°31.29'

FELLOWS  
 117.5 FLW  
 Chan 122  
 N35°05.59'  
 W119°51.93'  
 L-3-7, H-4

BUFLT  
 N34°39.15'  
 W120°16.63'  
 FELLOWS TRANSITION  
 8500  
 FRAMS TRANSITION  
 Left turn heading 280° at BUFLT INT  
 to intercept GLJ R-130 to GLJ VOR.

NOTE: Remain clear of restricted areas R-2516, R-2517 and R-2534 (A&B).



NOTE: Chart not to scale.

### DEPARTURE ROUTE DESCRIPTION

TAKEOFF RUNWAYS 2, 12, 30: Climbing right turn heading 190° to intercept GLJ R-130 to BUFLT.

FELLOWS TRANSITION (BUFLT4.FLW): From over BUFLT INT on FLW R-202 to FLW VOR/DME.

FRAMS TRANSITION (BUFLT4.FRAMS): Left turn heading 280° at BUFLT INT to intercept GLJ R-130 to GLJ VOR, then on GLJ R-290 to PISMO INT, then on PRB R-204 to FRAMS INT.

GAVIOTA TRANSITION (BUFLT4.GVO): From over BUFLT INT on GVO R-292 to GVO VORTAC.

SAN MARCUS TRANSITION (BUFLT4.RZS): From over BUFLT INT on RZS R-275 to RZS VORTAC.

# BUFLT FOUR DEPARTURE

SANTA MARIA, CALIFORNIA

SW-3, 10 OCT 2019 to 07 NOV 2019

SW-3, 10 OCT 2019 to 07 NOV 2019