

LOC/DME I-SMX <b>108.9</b> Chan 26	APP CRS <b>300°</b>	Rwy Idg TDZE Apt Elev <b>261</b>	N/A N/A N/A
--	------------------------	--	-------------------

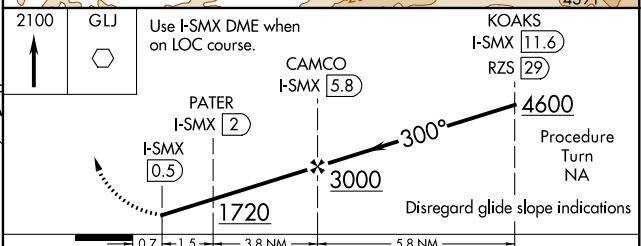
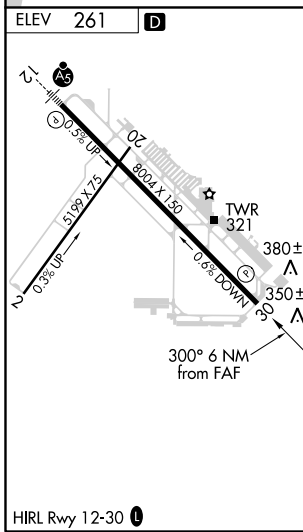
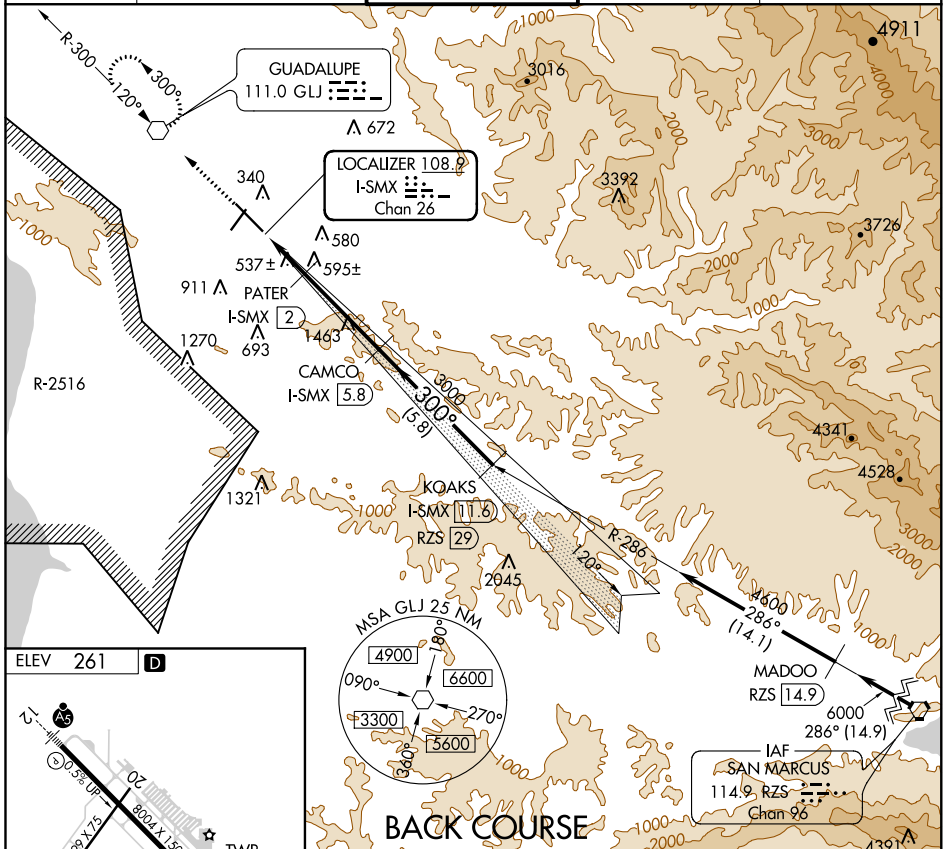
# LOC/DME BC-A

SANTA MARIA PUBLIC/CAPTAIN G ALLAN HANCOCK FIELD (SMX)

**⚠** Circling to Rwy 2 NA at night.  
Helicopter visibility reduction below 1 SM NA.

MISSED APPROACH: Climb to 2100 direct GLJ VOR and hold.

ATIS <b>121.15</b>	SANTA BARBARA APP CON* <b>124.15 327.8</b>	SANTA MARIA TOWER* <b>118.3</b> (CTAF) <b>239.25</b>	GND CON <b>121.9</b>	UNICOM <b>122.95</b>
-----------------------	---	---	-------------------------	-------------------------



CATEGORY	A	B	C	D
CIRCLING	1100-1 839 (900-1)	1100-1¼ 839 (900-1¼)	1100-2½ 839 (900-2½)	1320-3 1059 (1100-3)

SW-3, 10 OCT 2019 to 07 NOV 2019

SW-3, 10 OCT 2019 to 07 NOV 2019