


VOR GLJ 111.0	APP CRS 117°	Rwy Idg TDZE Apt Elev	8004 230 261
-------------------------	------------------------	-----------------------------	---

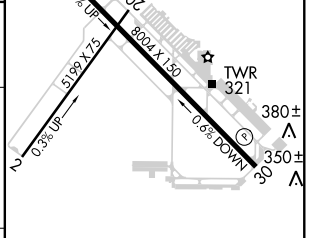
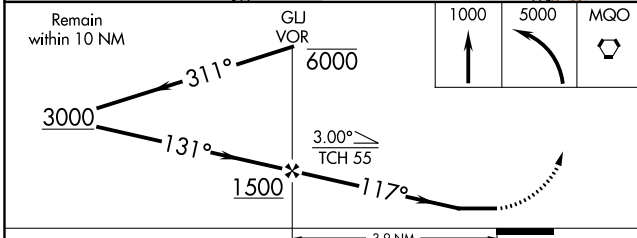
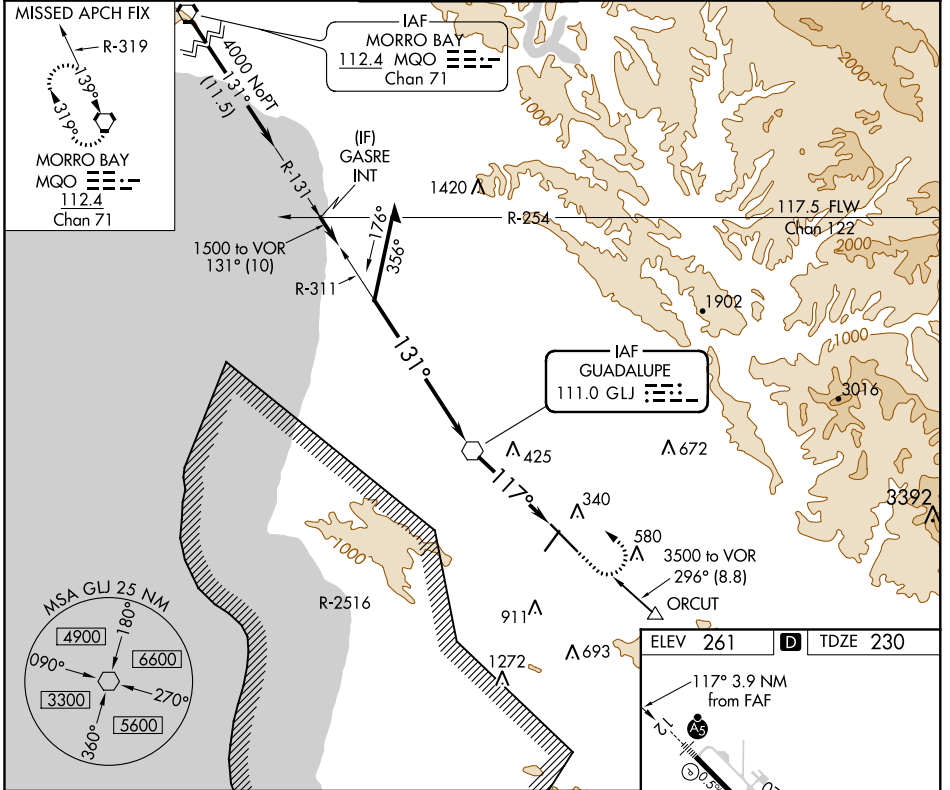
VOR RWY 12
SANTA MARIA PUBLIC/CAPTAIN G ALLAN HANCOCK FIELD (SMX)

⚠ When local altimeter setting not received, use Vandenberg altimeter setting and increase all MDA 60 feet. Increase S-12 Cat C/D visibility and Circling Cat C visibility 1/2 mile. For inop MALSRL when using Vandenberg altimeter setting, increase S-12 Cat C/D visibility to 1 1/8 miles. Night Landing Rwy 2 NA.

MALSRL 

MISSED APPROACH: Climb to 1000 then climbing left turn to 5000 direct MQO VORTAC and hold.

ATIS 121.15	SANTA BARBARA APP CON* 124.15 327.8	SANTA MARIA TOWER* 118.3 (CTAF) 239.25	GND CON 121.9	UNICOM 122.95
-----------------------	---	--	-------------------------	-------------------------



CATEGORY	A	B	C	D
S-12	740/24 510 (500-1/2)		740/55 510 (500-1)	
CIRCLING	860-1 599 (600-1)		860-1 1/2 599 (600-1 1/2)	1320-3 1059 (1100-3)

HIRL Rwy 12-30

FAF to MAP 3.9 NM

Knots	60	90	120	150	180
Min:Sec	3:54	2:36	1:57	1:34	1:18

SW-3, 10 OCT 2019 to 07 NOV 2019

SW-3, 10 OCT 2019 to 07 NOV 2019