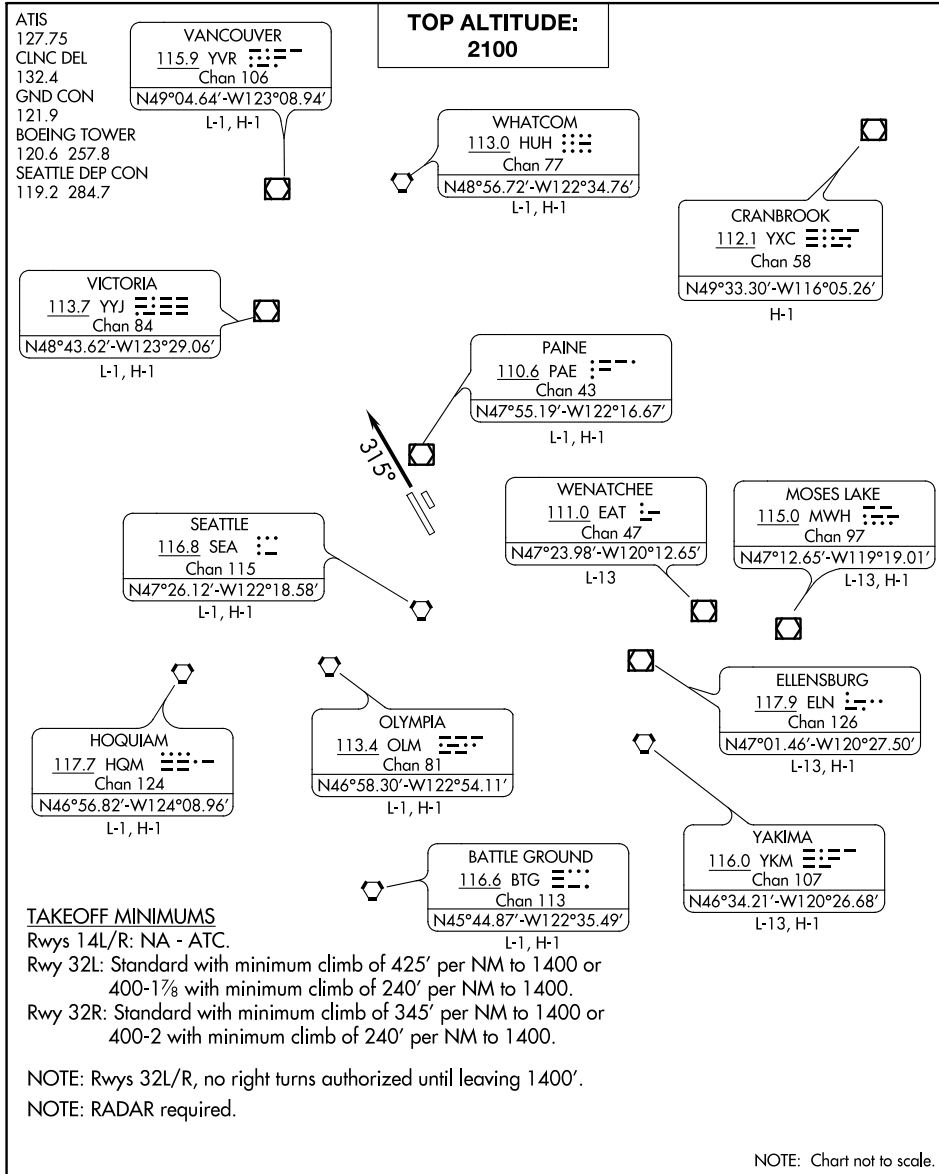


NEEDLE ONE DEPARTURE

BOEING FIELD/KING COUNTY INTL (BFI)
SEATTLE, WASHINGTON

AL-384 (FAA)



NW-1, 10 OCT 2019 to 07 NOV 2019

NW-1, 10 OCT 2019 to 07 NOV 2019

TAKEOFF MINIMUMS

Rwys 14L/R: NA - ATC.

Rwy 32L: Standard with minimum climb of 425' per NM to 1400 or 400-1 $\frac{7}{8}$ with minimum climb of 240' per NM to 1400.

Rwy 32R: Standard with minimum climb of 345' per NM to 1400 or 400-2 with minimum climb of 240' per NM to 1400.

NOTE: Rwys 32L/R, no right turns authorized until leaving 1400'.

NOTE: RADAR required.

DEPARTURE ROUTE DESCRIPTION

TAKEOFF RUNWAYS 32L/R: Climb heading 315°, maintain 2100 or ATC assigned altitude, for RADAR vectors to assigned route/fix, expect clearance to filed altitude within 3 minutes after departure.

NEEDLE ONE DEPARTURE

SEATTLE, WASHINGTON
BOEING FIELD/KING COUNTY INTL (BFI)