

WAAS CH 40311 W01A	APP CRS 005°	Rwy Idg TDZE 62 Apt Elev 62
--	------------------------	---

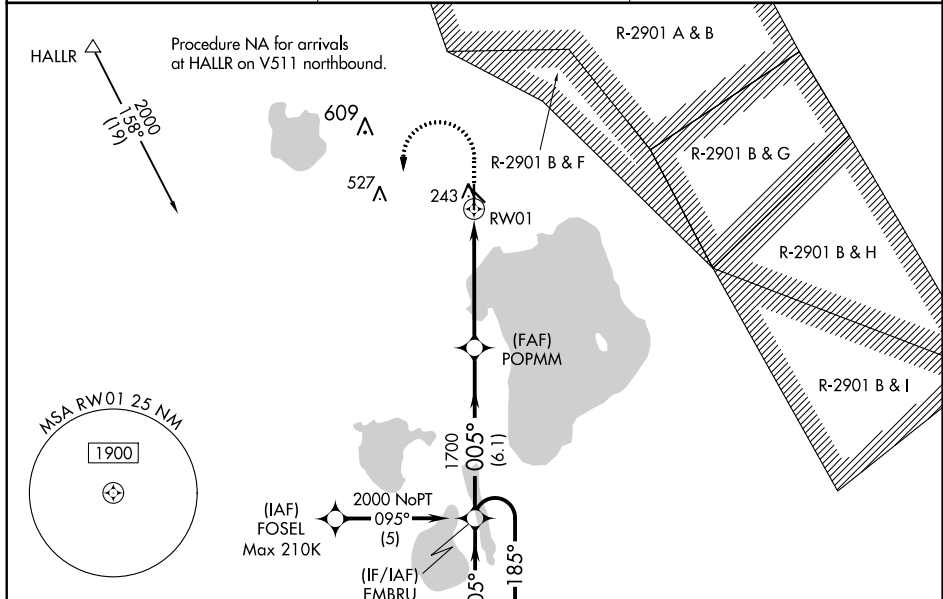
RNAV (GPS) RWY 1

SEBRING RGNL (S/E/F)

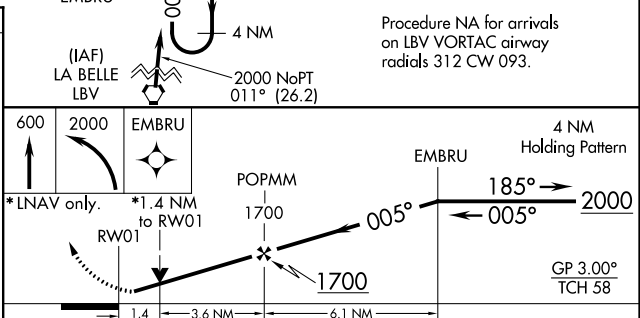
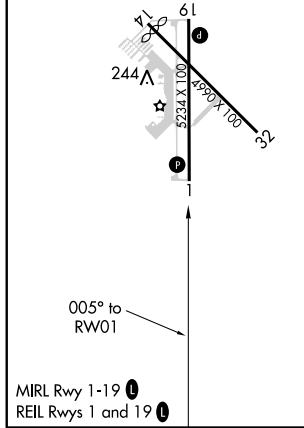
NA For uncompensated Baro-VNAV systems, LNAV/VNAV NA below -15°C (5°F) or above 54°C (130°F). DME/DME RNP-0.3 NA. When local altimeter setting not received, use Vero Beach Rgnl altimeter setting and increase all DA 122 feet and all MDA 140 feet; increase LPV all Cats visibility 1/2 mile, LNAV/VNAV all Cats visibility and LNAV Cats C and D visibility 3/8 mile, increase Circling Cat C visibility 1/2 mile and Cat D visibility 1/4 mile. Night landing: Rwy 14, 32 NA. VDP and Baro-VNAV NA when using Vero Beach altimeter. Helicopter visibility reduction below 3/4 SM NA.

MISSED APPROACH: Climb to 600 then climbing left turn to 2000 direct EMBRU and hold.

AWOS-3 119.475	MIAMI CENTER 134.55 257.7	UNICOM 122.7 (CTAF) 0
--------------------------	-------------------------------------	---------------------------------



ELEV 62	TDZE 62
---------	---------



CATEGORY	A	B	C	D
LPV DA	381-1 319 (400-1)			
LNAV/VNAV DA	408-1 3/8 346 (400-1 3/8)			
LNAV MDA	540-1	478 (500-1)	540-1 3/8	478 (500-1 3/8)
CIRCLING	600-1	538 (600-1)	600-1 1/2 538 (600-1 1/2)	620-2 558 (600-2)

SE-3, 10 OCT 2019 to 07 NOV 2019

SE-3, 10 OCT 2019 to 07 NOV 2019