

APP CRS	Rwy Idg	5234
185°	TDZE	62
	Apt Elev	62

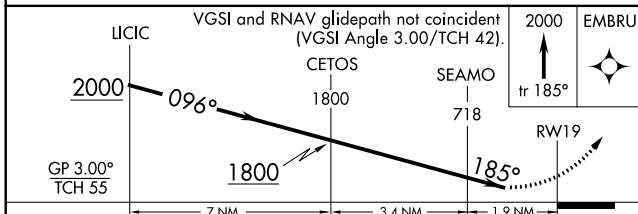
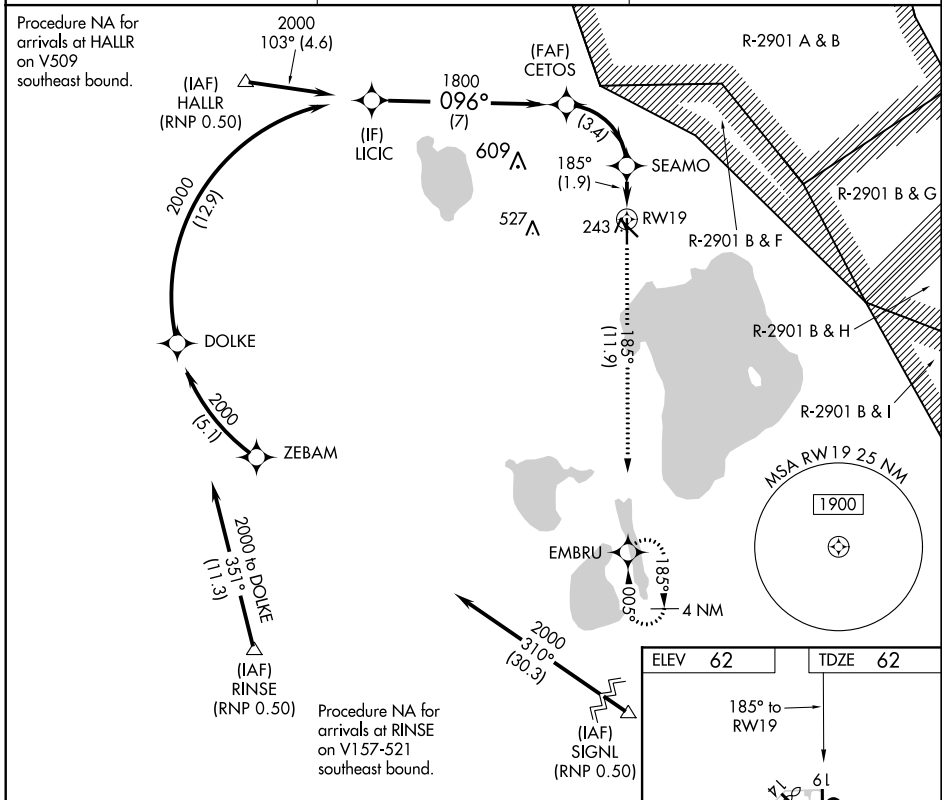
RNAV (RNP) RWY 19

SEBRING RGNL (SEF)

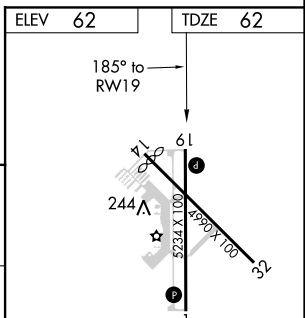
▽ For uncompensated Baro-VNAV systems, procedure NA below -1.5°C (5°F) or above 54°C (130°F). GPS and RF required. Night landing: Rwy 14, 32 NA.

△ NA MISSED APPROACH: Climb to 2000 on track 185° to EMBRU and hold.

AWOS-3 119.475	MIAMI CENTER 134.55 257.7	UNICOM 122.7 (CTAF) 0
--------------------------	-------------------------------------	---------------------------------



CATEGORY	A	B	C	D
RNP 0.30 DA	440-1¼		378 (400-1¼)	



AUTHORIZATION REQUIRED

MIRL Rwy 1-19 0
REIL Rwy 1 and 19 0

SE-3, 10 OCT 2019 to 07 NOV 2019

SE-3, 10 OCT 2019 to 07 NOV 2019