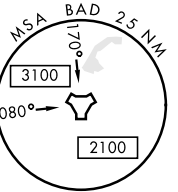
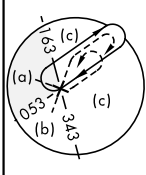
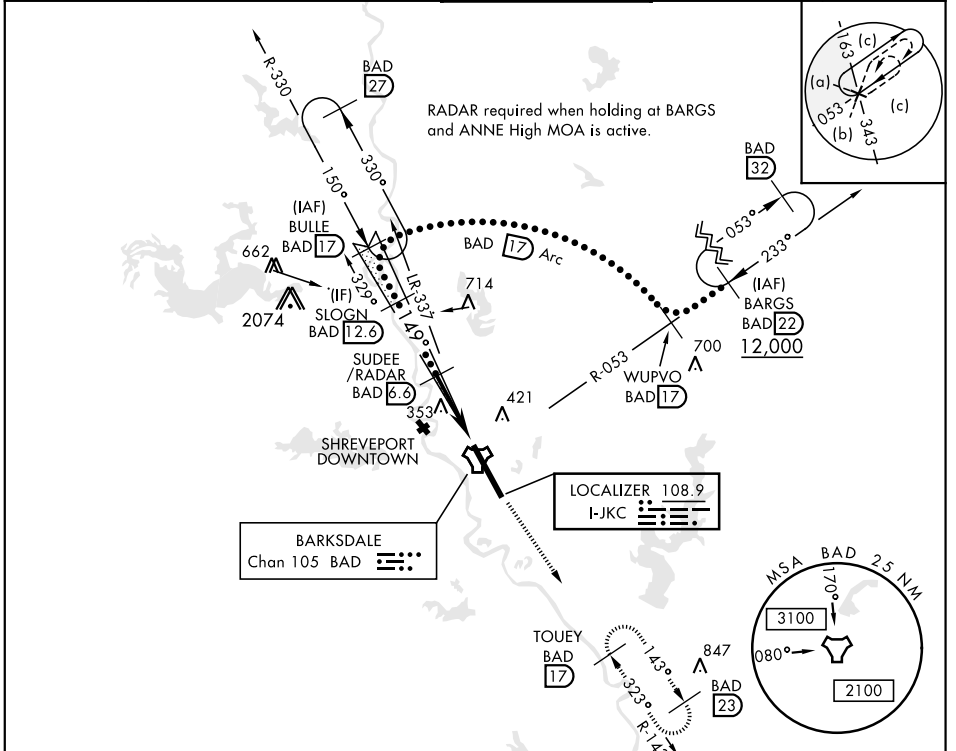


HI-ILS or LOC W RWY 15

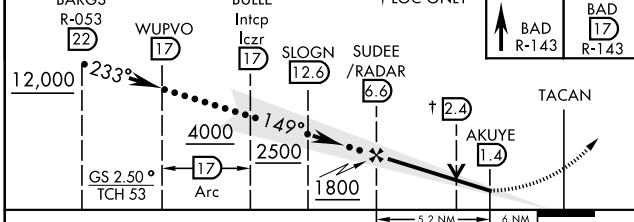
LOC I-JKC 108.9	APCH CRS 149°	Rwy Idg 11,758 THRE 163 Arpt Elev 165	JAL-391 [USAF]	ALSF-1	BARKSDALE AFB (KBAD)
* When ALS inop, increase CAT CDE RVR to 40 and vis to 3/4 mile. ** When ALS inop, increase CAT CDE vis to 1 1/2 miles. *** Circling not authorized W of Rwy.			MISSED APPROACH: Climb to 3000 via BAD R-143 direct TOUEY and hold.		

ATIS 307.025	SHREVEPORT APP CON 320°-152° 123.75 360.725 153°-319° 119.9 335.55	BARKSDALE TOWER 128.25 278.3	GND CON 121.8 253.5	ASR
------------------------	--	--	-------------------------------	-----



RADAR or DME REQUIRED

EMERG SAFE ALT 100 NM 3300



ELEV 165	THRE 163
149° 5.8 NM from FAF	
277	288
247	206
216	255
339	289
TWR 324	247
HRL Rwy 15-33	
FAF to MAP 5.2 NM	
Knots	120 140 160 180 200
Min:Sec	2:36 2:14 1:57 1:44 1:34

CATEGORY	C	D	E
S-ILS 15*	363/24	200	(200-1/2)
S-LOC 15**	640/50	477	(500-1)
CIRCLING ***	NOT AUTHORIZED	760-2 595 (600-2)	780-2 1/4 615 (700-2 1/4)

HI-ILS or LOC W RWY 15

SC-4, 10 OCT 2019 to 07 NOV 2019

SC-4, 10 OCT 2019 to 07 NOV 2019