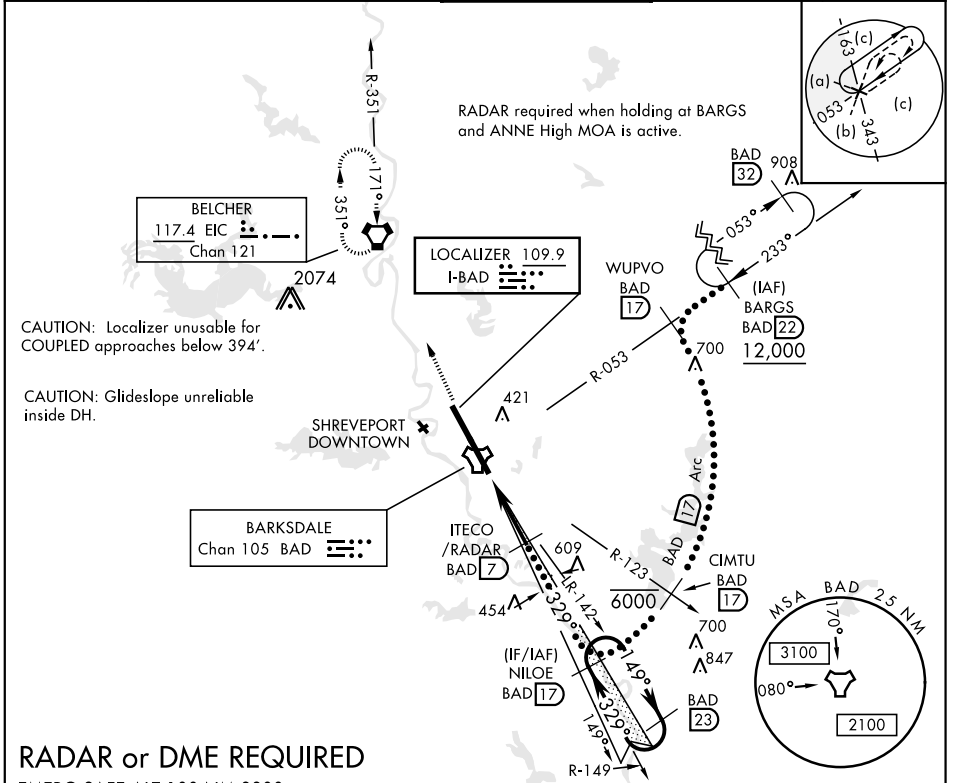


# HI-ILS or LOC Z RWY 33

LOC I-BAD <b>109.9</b>	APCH CRS <b>329°</b>	Rwy Idg <b>11,758</b> THRE <b>161</b> Arprt Elev <b>165</b>	JAL-391 [USAF]	BARKSDALE AFB (KBAD)
*When ALS inop, increase CAT CDE RVR to 40 and vis to 3/4 mile. **When ALS inop, increase CAT CDE RVR to 60 and vis to 1 1/8 miles. ***Circling not authorized W of Rwy.			ALSF-1	MISSED APPROACH: Climb to 3100 direct to EIC VORTAC and hold.

ATIS <b>307.025</b>	SHREVEPORT APP CON 320°-152° <b>123.75 360.725</b> 153°-319° <b>119.9 335.55</b>	BARKSDALE TOWER <b>128.25 278.3</b>	GND CON <b>121.8 253.5</b>	ASR
------------------------	--	--	-------------------------------	-----



## RADAR or DME REQUIRED

EMERG SAFE ALT 100 NM 3300

3100	EIC	† LOC ONLY	ITECO /RADAR	NILOE Intcp Iczr	ELEV 165	THRE 161
TACAN	JOGAB 1.8	329°	329°	149°	3000	GS 2.50° TCH 49
6 NM	5.2 NM					
CATEGORY	C	D	E			
S-ILS 33*	361/24	200	(200-1/2)			
S-LOC 33**	560/35	399	(400-%)			
CIRCLING ***	NOT AUTHORIZED	760-2 595 (600-2)	780-2 1/4 615 (700-2 1/4)			
				HIRL Rwy 15-33	FAF to MAP 5.3 NM	
				Knots	120	140 160 180 200
				Min:Sec	2:36	2:14 1:57 1:44 1:34

# HI-ILS or LOC Z RWY 33

SC-4, 10 OCT 2019 to 07 NOV 2019

SC-4, 10 OCT 2019 to 07 NOV 2019