

HI-VOR/DME Z RWY 33

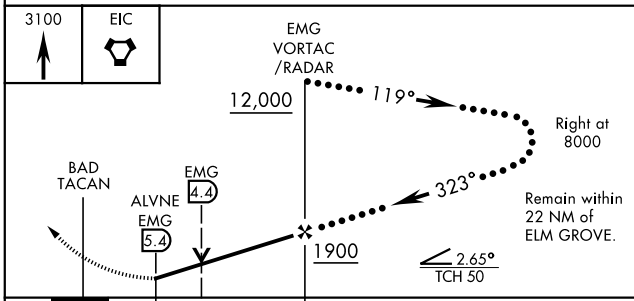
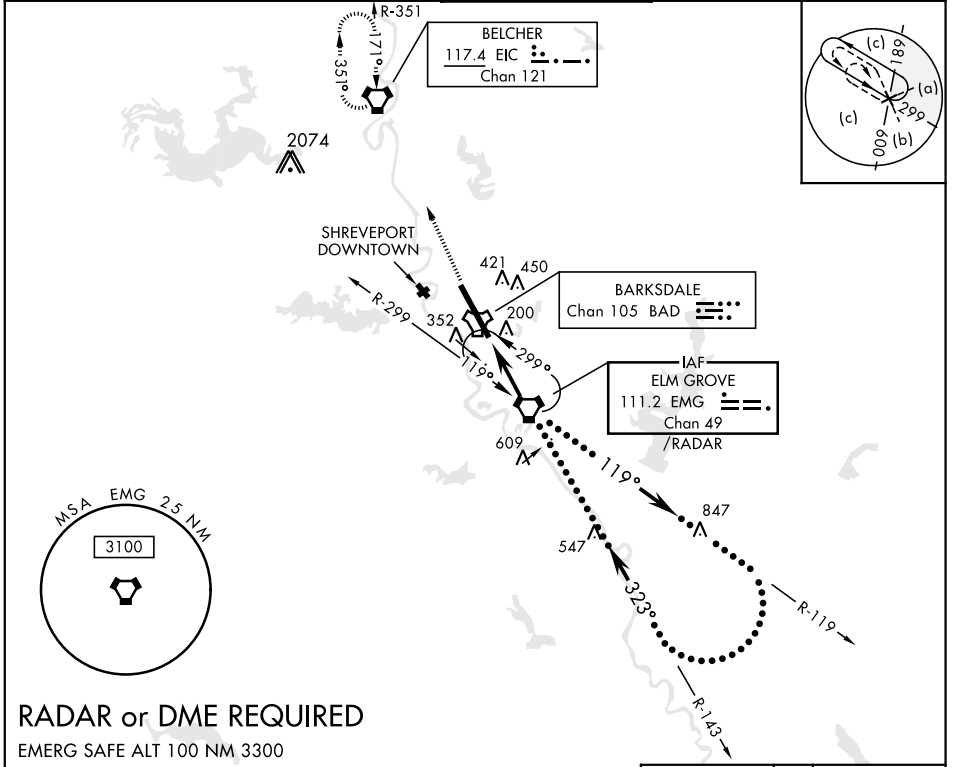
VORTAC EMG 111.2 Chan 49	APCH CRS 323°	Rwy Idg 11,758 THRE 161 Arprt Elev 165	JAL-391 [USAF]	BARKSDALE AFB (KBAD)
--	-------------------------	---	----------------	----------------------

* When ALS inop, increase CAT CDE vis to 1 1/2 miles.
 ** Circling not authorized W of Rwy.

ALSF-1 

MISSED APPROACH: Climb to 3100 direct to EIC VORTAC and hold.

ATIS 307.025	SHREVEPORT APP CON 320°-152° 123.75 360.725 153°-319° 119.9 335.55	BARKSDALE TOWER 128.25 278.3	GND CON 121.8 253.5	ASR
------------------------	--	--	-------------------------------	-----



ELEV 165	THRE 161
HIRL Rwy 15-33	
FAF to MAP 5.4 NM	
Knots	120 140 160 180 200
Min:Sec	2:42 2:19 2:01 1:48 1:37

CATEGORY	C	D	E
S-33*	640/50	479 (500-1)	
CIRCLING**	NOT AUTHORIZED	760-2 595 (600-2)	780-2 1/4 615 (700-2 1/4)

HI-VOR/DME Z RWY 33

SC-4, 10 OCT 2019 to 07 NOV 2019

SC-4, 10 OCT 2019 to 07 NOV 2019

